



Ultrasonics.Steam.Ultraclean.

Operating Manual



Elmasolvex VA Tools

PC Program

• English •

Contents

1	General.....	3
2	Product description.....	4
2.1	Product features	4
2.2	System requirements	4
3	Setting up the PC software.....	5
3.1	Software Download.....	5
3.2	Installation	5
3.3	Establish connection to the machine.....	9
3.4	Language selection.....	12
4	Software functions.....	13
4.1	Perform update	13
4.2	Recording screenshots	20
4.3	Managing cleaning programs.....	24
4.3.1	Reading programs from the machine	24
4.3.2	Adding new programs.....	29
4.3.3	Deleting programs	35
4.4	Retrieving the machine event report	38
5	Manufacturer address/contact address	53

1

General

This operating manual is an integral part of the scope of delivery of the software.

We reserve the right to make changes from the design shown in this operating manual due to technical further developments.

An operating manual cannot take into account every conceivable possibility. For more information or for issues that are not or insufficiently covered in this manual, please consult your dealer or the manufacturer.

2 Product description

The Elmasolvex VA Tools PC software has been developed as enhancement for the Elmasolvex VA watch cleaning machines. The software provides the possibility to connect the machine to a computer and in this way makes additional functions available.

2.1 Product features

- Update of the operating software of the Elmasolvex VA watch cleaning machine
- Production of screenshots of the machine screen and storage of the images on a computer
- Backup of created cleaning programs of the watch cleaning machine to a computer
- Transfer of saved cleaning programs from a computer to a watch cleaning machine
- Deletion of created cleaning programs from the watch cleaning machine
- Retrieval of the event log from the watch cleaning machine and saving of the event log in a PDF file

2.2 System requirements

The Elmasolvex VA Tools PC software has been developed for the Microsoft Windows operating system and is not executable on other operating systems.

The following versions of Windows are supported:

- Windows XP (32/64 bit)
- Windows 7 (32/64 bit)
- Windows 8.1 (32/64 bit)
- Windows 10 (32/64 bit)

To be able to connect the Elmasolvex VA to the computer, a USB interface (*USB 1.0/2.0/3.0 type A*) is required.

3 Setting up the PC software

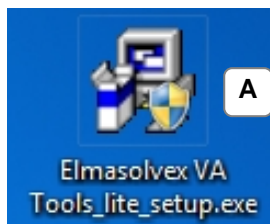
3.1 Software Download

- Proceeding**
1. Go to Elma Homepage / Download Area and register yourself:
<https://www.elma-ultrasonic.com/en/service/software-updates/>
 2. After receiving the confirmation email open the link to the download area.
 3. Download the following files:
 - * **Elmasolvex VA Tools_lite_setup.exe** (PC-Software).When software update is required too, download also:
 - * **Elmasolvex VA_R009.bin** (machine software).

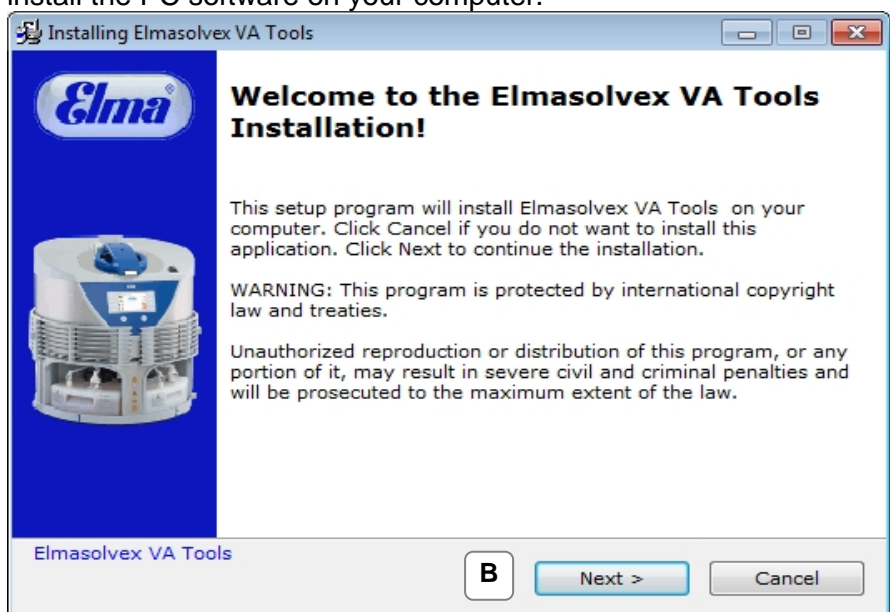
3.2 Installation



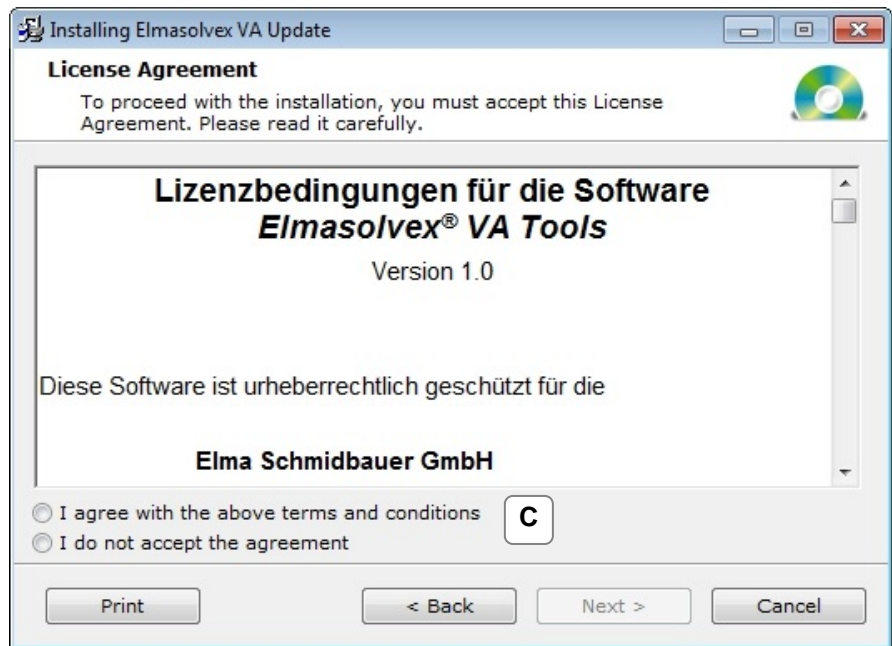
Attention! The PC / notebook must **not** be connected to the Elmasolvex VA during software installation!



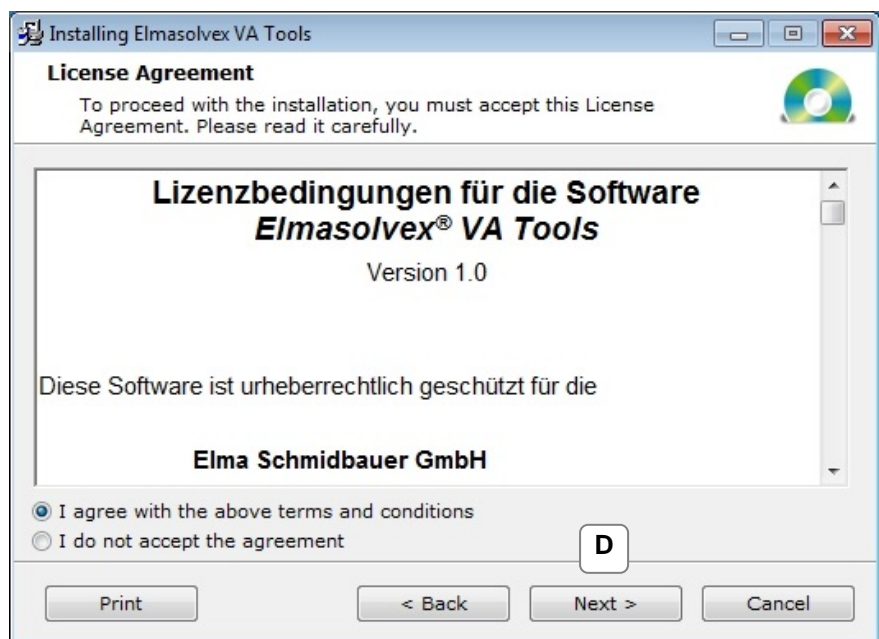
- A** Click on the file "**Elmasolvex VA Tools_lite_setup.exe**" to install the PC software on your computer.



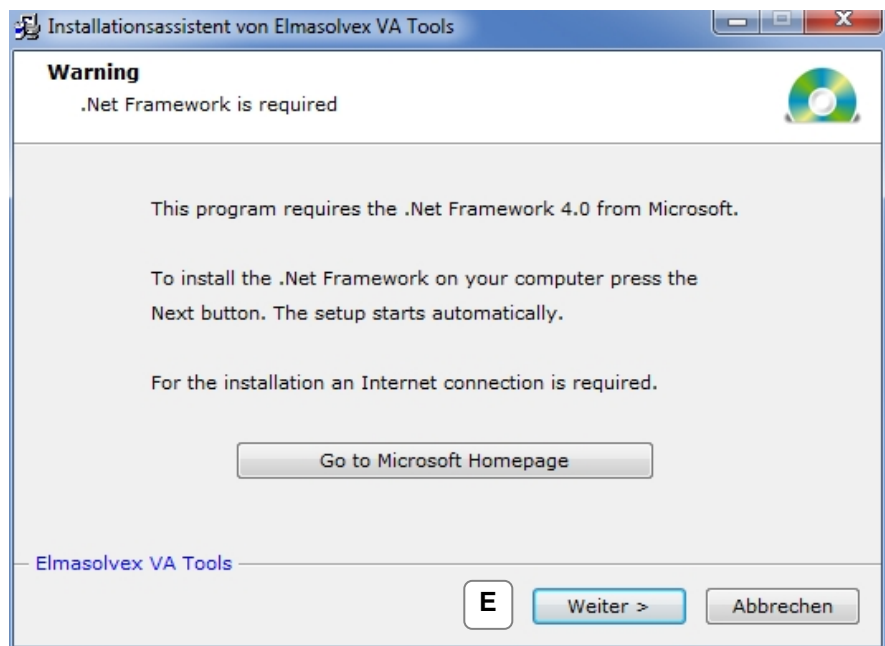
- B** The installation menu opens. Click on "Next" to continue.



- C** The Elmasolvex VA Tools PC software is a copyrighted software. For this reason, you must accept the licence agreement to continue the software installation.

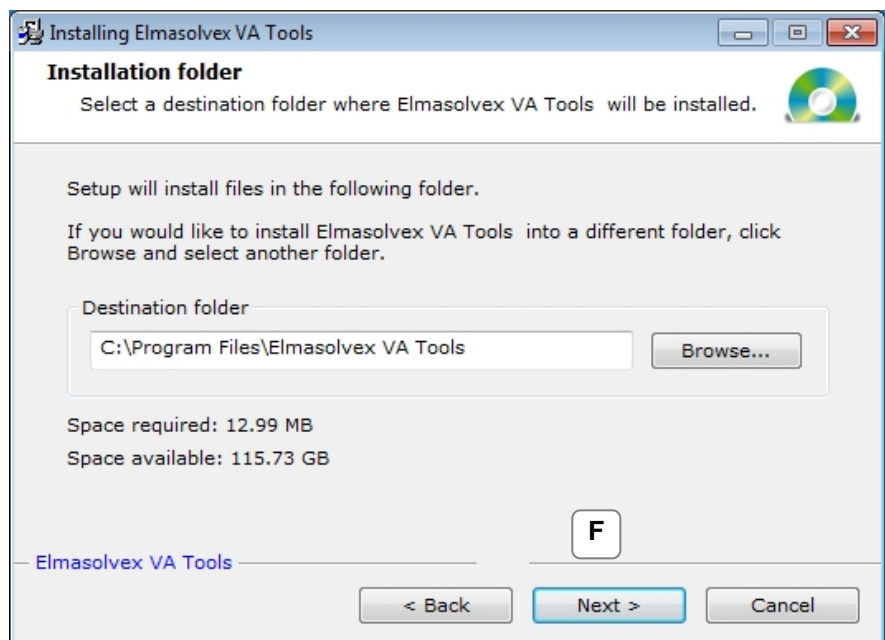


- D** After accepting the license agreement, click on "Next" to continue.

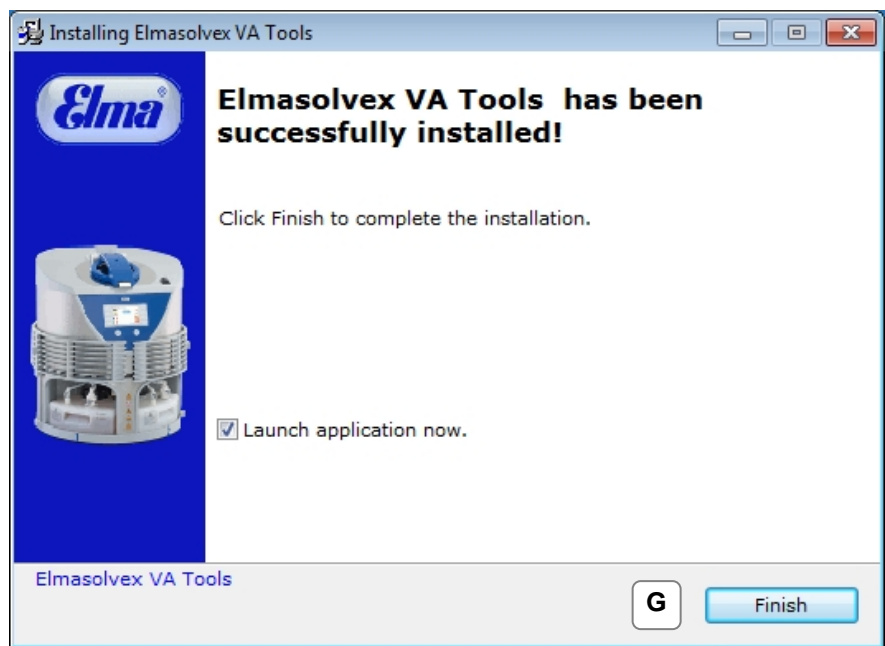


- E** The PC software can only be installed if Microsoft.Net Framework 4.0 is installed on your computer. If it is not installed, go to the Microsoft website and download and install .Net Framework 4.0. You reach the Microsoft website by clicking on "*Go to Microsoft Homepage*".

An internet connection is required.



- F** Select the location where you would like to install the program and confirm this with "*Next*".



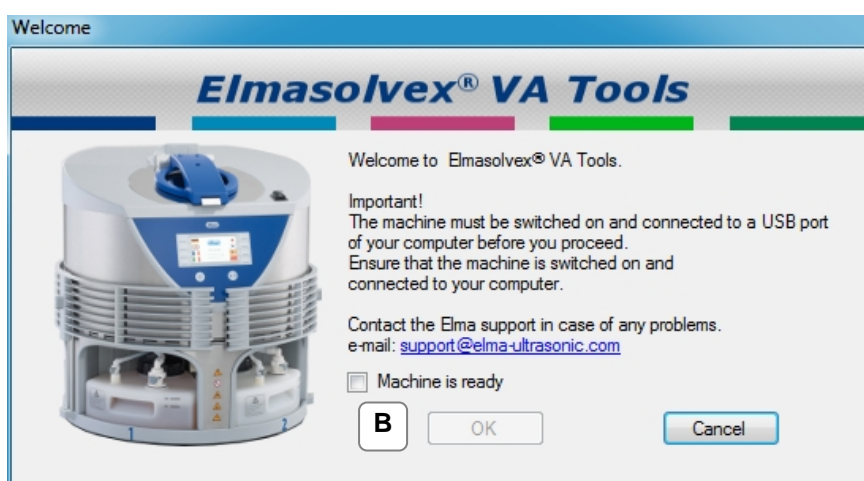
- G** The installation has been completed successfully. Exit from the installation menu by clicking on "*Finish*". The Elmasolvex VA Tools PC software will be started automatically.

3.3

Establish connection to the machine



- A** The installation software creates a shortcut on your desktop which you can use to start the PC software. Double clicking on the shortcut opens the following window.



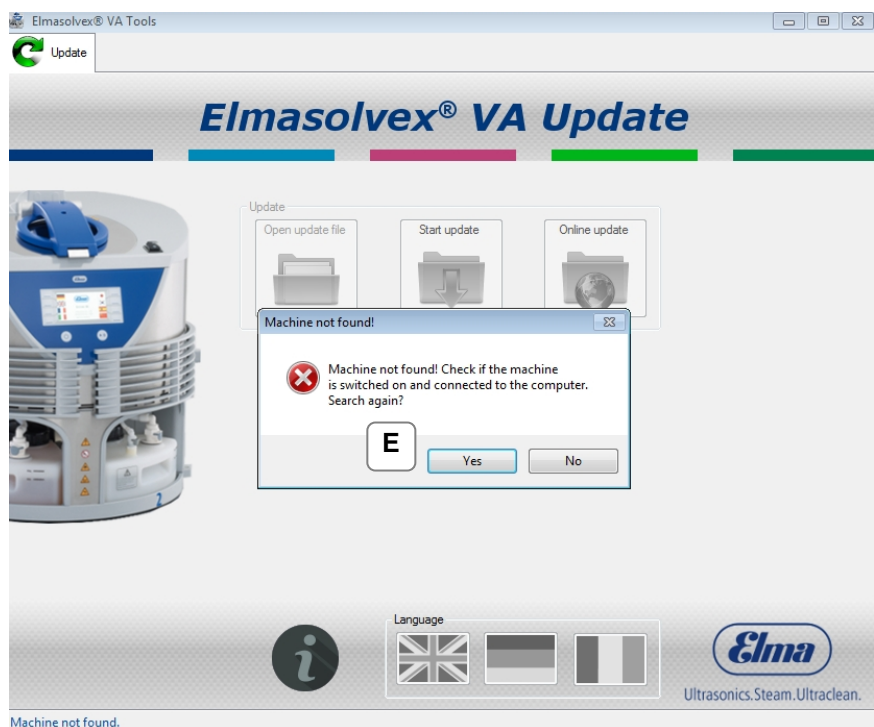
- B** Read carefully through the instructions in the displayed start screen and confirm by clicking on the checkbox "*Machine is ready*". All points must be fulfilled so that the machine can be connected to the computer.



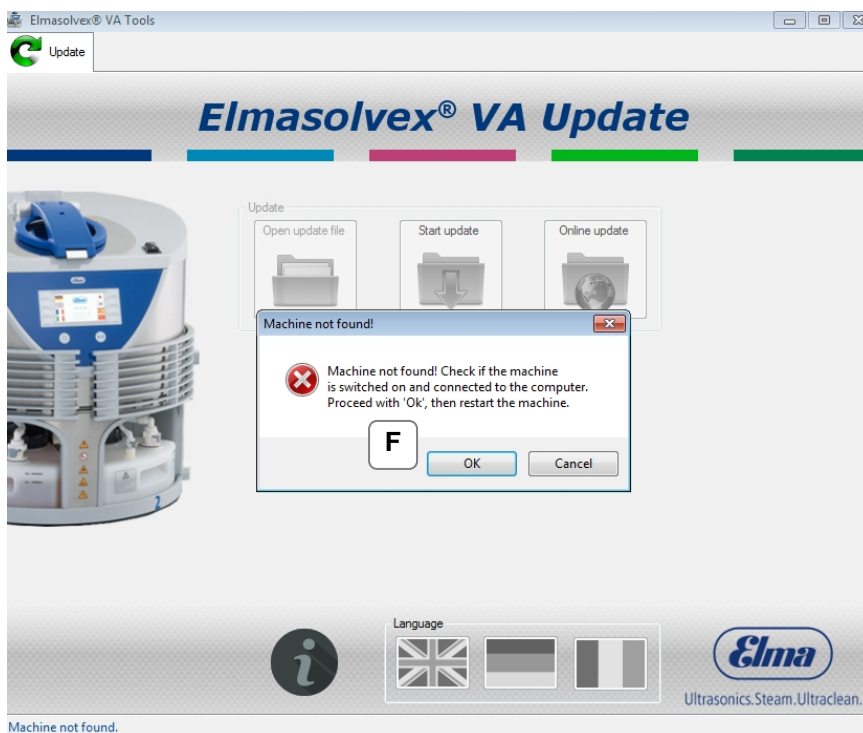
- C** Click on "OK" to continue.



- D** The PC software searches for the Elmasolvex VA. This is shown on the bottom left of the screen.



- E** The above error message is displayed if the Elmasolvex VA is not found.
Check whether the machine is switched on and connected to the PC via USB cable.
Click on "Yes" to search again.



- F** If the Elmasolvex VA has still not been found, check again whether the machine is switched on and connected to the PC via USB cable. Then click on "OK" and restart the machine. The machine is searched for a third time.



- G** The Elmasolvex VA has been found. The current software version of the machine is shown on the bottom left.

3.4

Language selection



- A** Your required program language can be selected on the bottom right. The flag with the grey background shows the currently selected language. The languages English, German and French are available.

4

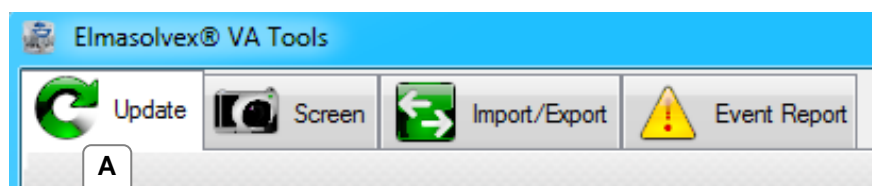
Software functions

4.1

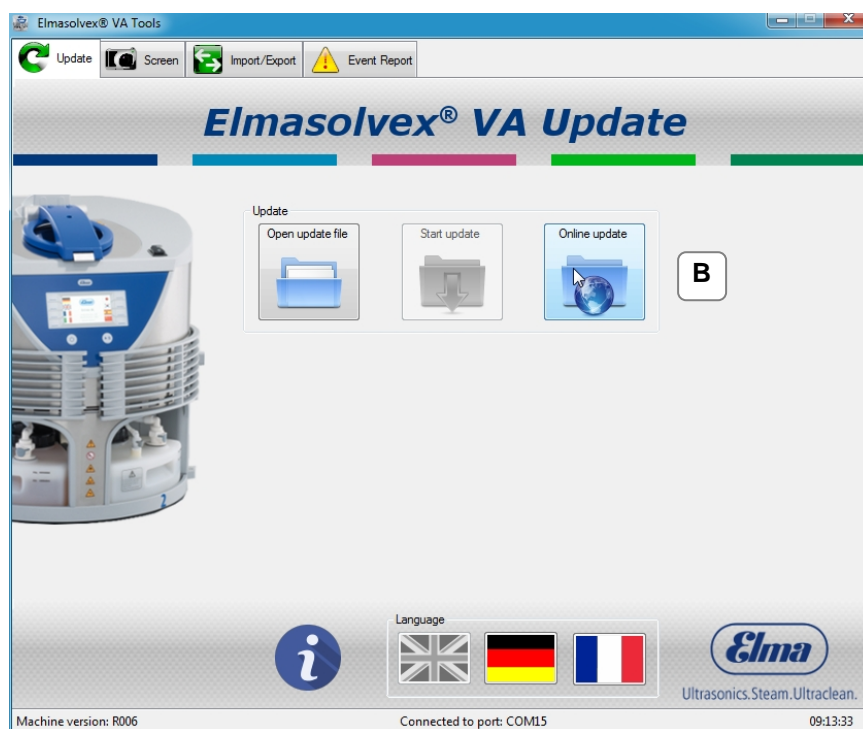
Perform update

This chapter explains how you can perform a software update on your Elmasolvex VA.

The machine must be connected to the computer as described under point 3.3. Then follow the instructions on the following pages.

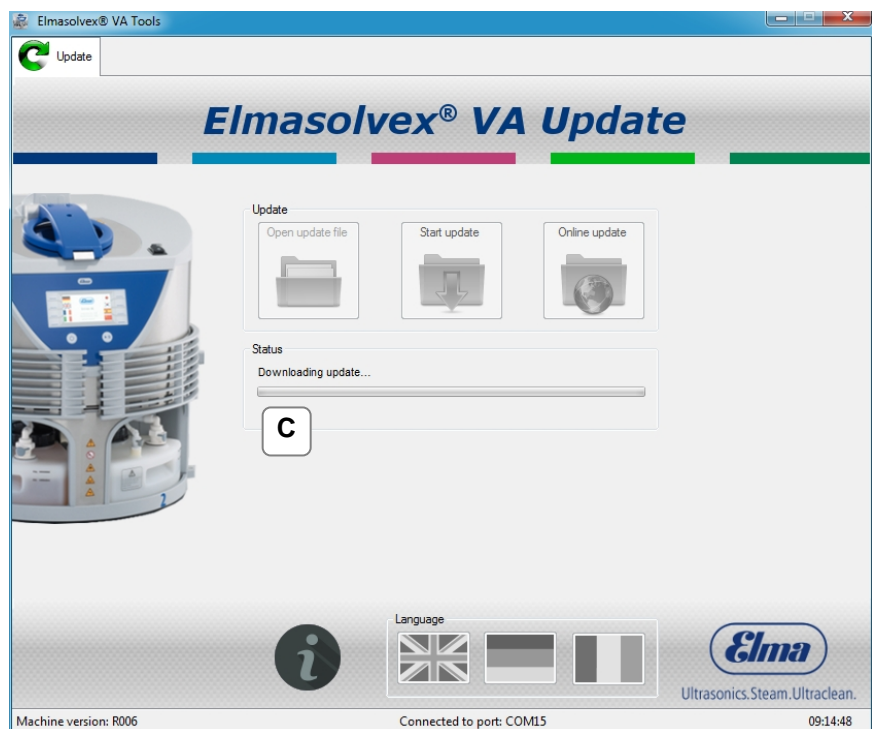


- A** First, select the tab "Update".

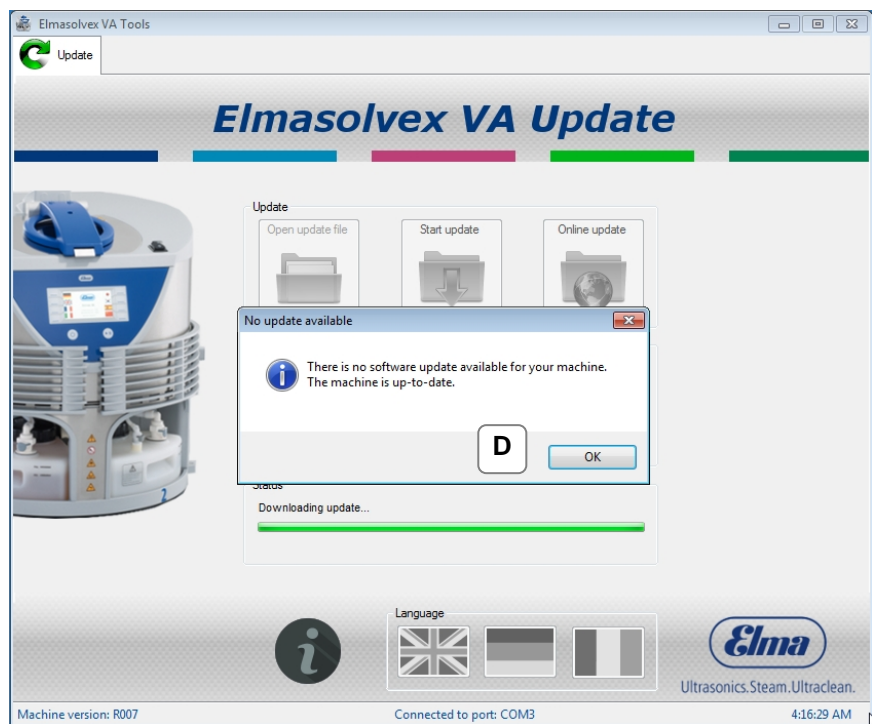


- B** You can search online for an update for your machine. For this, click on "Online update".

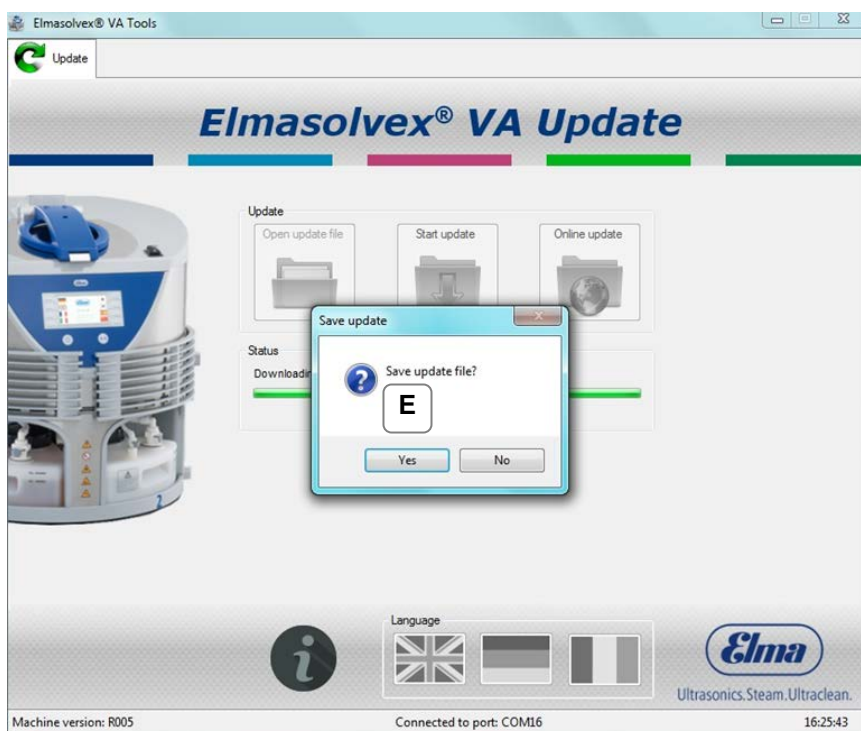
An internet connection is required.



- C** A machine update is searched for on the Elma website. This process can take a few minutes.

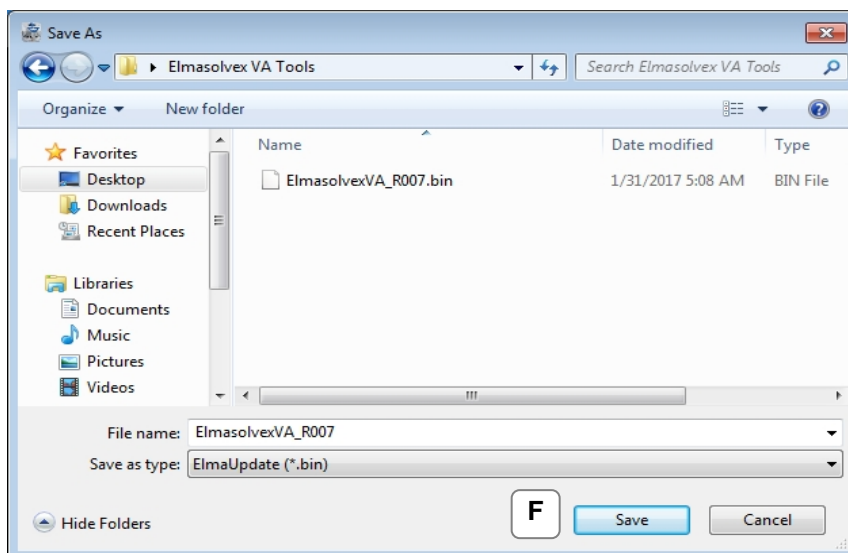


- D** If your machine is up to date, i.e. the latest available software is installed on the machine, the above notification is displayed.



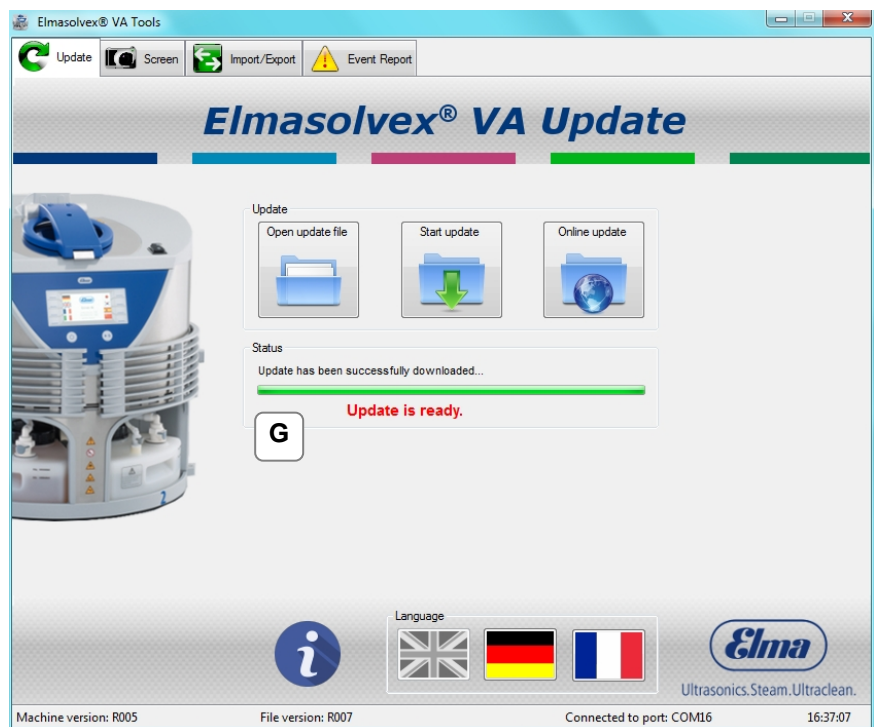
- E** If your machine is not up to date, i.e. the latest available software is not installed on the machine, the above notification is displayed.

You can save the update file on your PC or install the update without saving the update file.

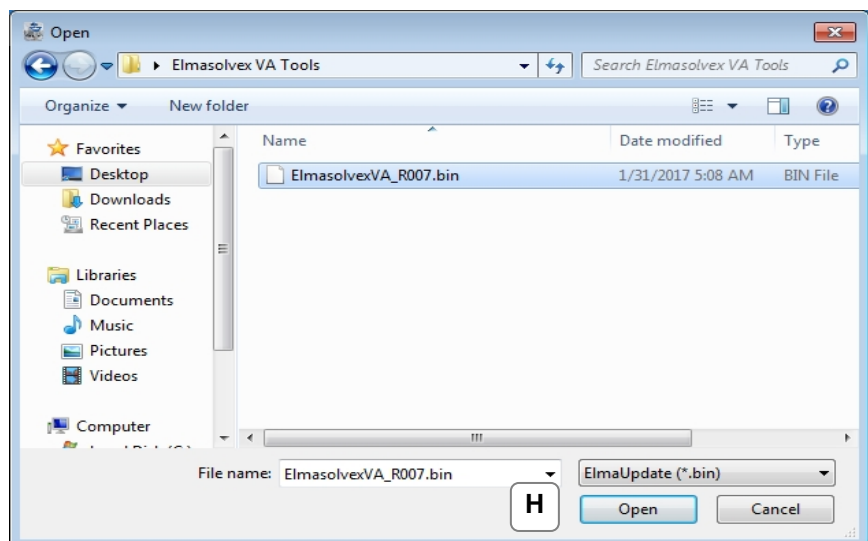


- F** The above screenshot shows the "**Elmasolvex VA_RXXX.bin**" update file to be saved. Select the required storage location and click on "Save".

You can open this update file again at a later time, for example to update the software of another Elmasolvex VA.

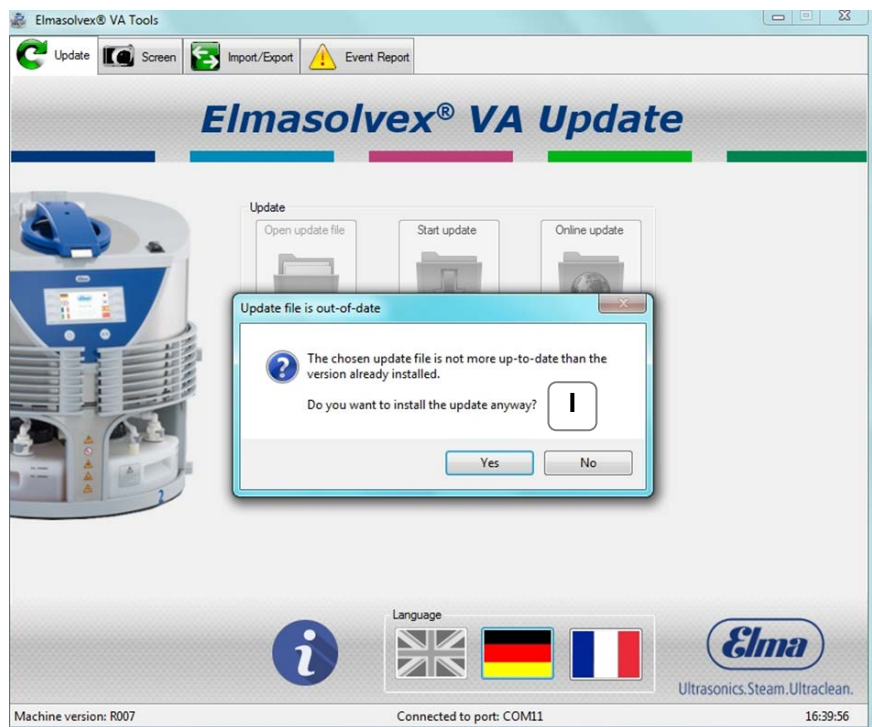


- G** The update file has been downloaded successfully from the Elma website and can now be installed on the machine by clicking on "*Start update*".



- H** If you do not have any internet access at the machine location, you can also open the update file manually. The current update file must be available on a data carrier for this.

Click on "*Open update file*". The dialogue shown above is displayed. Navigate to the storage location of the update file on your PC and open the file by clicking on "*Open*".



- I The notification shown above is displayed if the software of your machine is newer than the one of the selected update file.

Important: Do not install older software on the machine.



- J If the selected update file is newer than the software on the machine and the update file could be opened successfully, the software can be installed on the machine by clicking on "Start update".

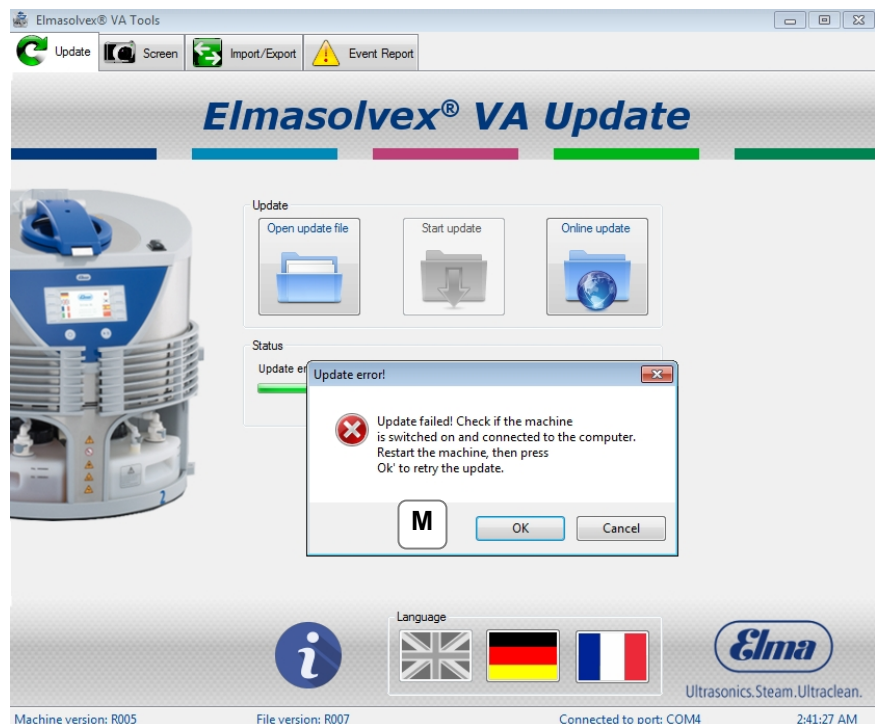


- K** The machine must not be switched off or the connection to the computer interrupted while the update on the Elmasolvex VA is being performed. The progress of the update is shown using the green loading bar with percent indicator. The installation of the update can take a few minutes.



- L** The update has been performed successfully. The new software version of the Elmasolvex VA is shown at the bottom left of the screen.

If you would like to update another machine, follow the instructions and confirm with "Yes".



- M** The error notification shown above is displayed if any error has occurred during the update process. Power off the machine and restart. Check again whether the machine is connected to the PC via USB cable. Then you can perform the update again. Contact Elma Customer Service if the update cannot be installed.

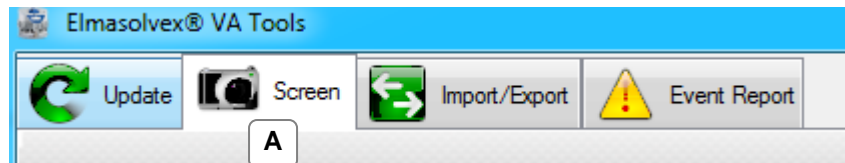


- N** Clicking on the "i" next to the language selection shows you general information about the PC software and the contact details for Elma Schmidbauer GmbH.

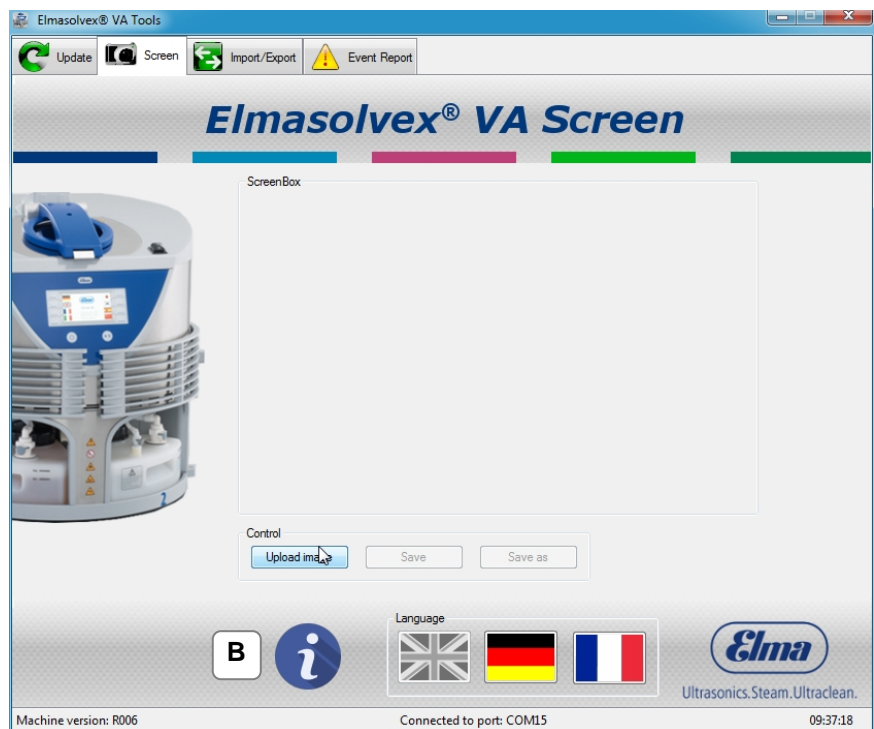
4.2

Recording screenshots

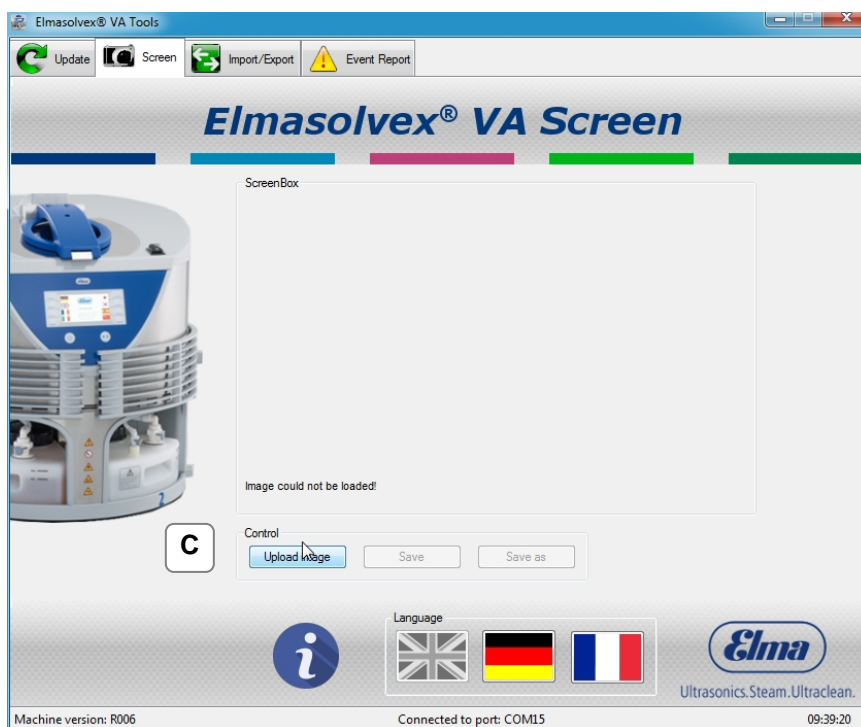
This chapter explains how you can make a screenshot of the machine screen of the Elmasolvex VA.



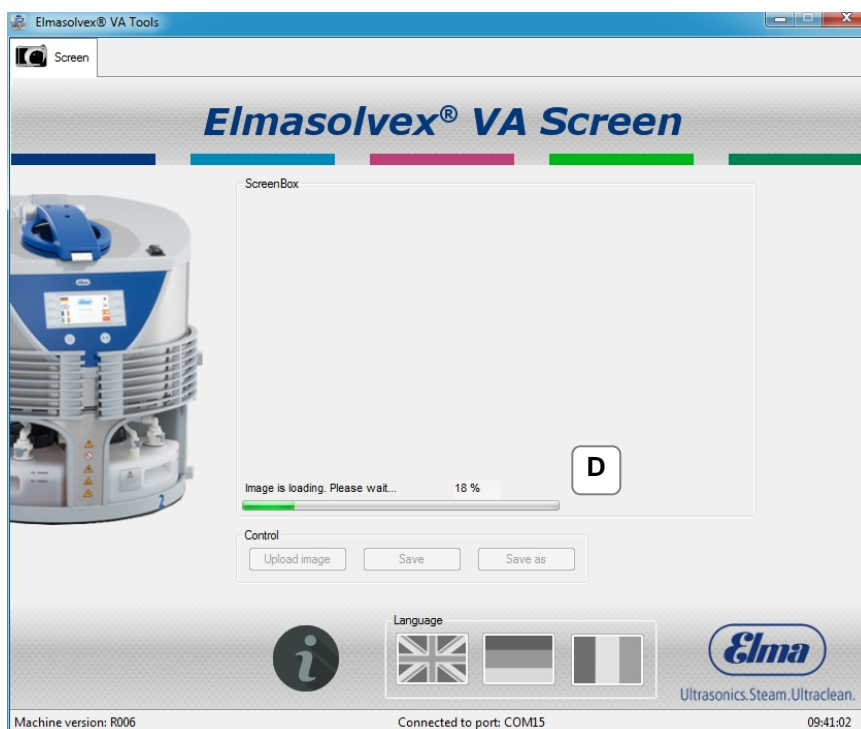
- A** For this select the tab "Screen".



- B** Clicking on "*Upload image*" transfers the current screen output of the machine to your computer.



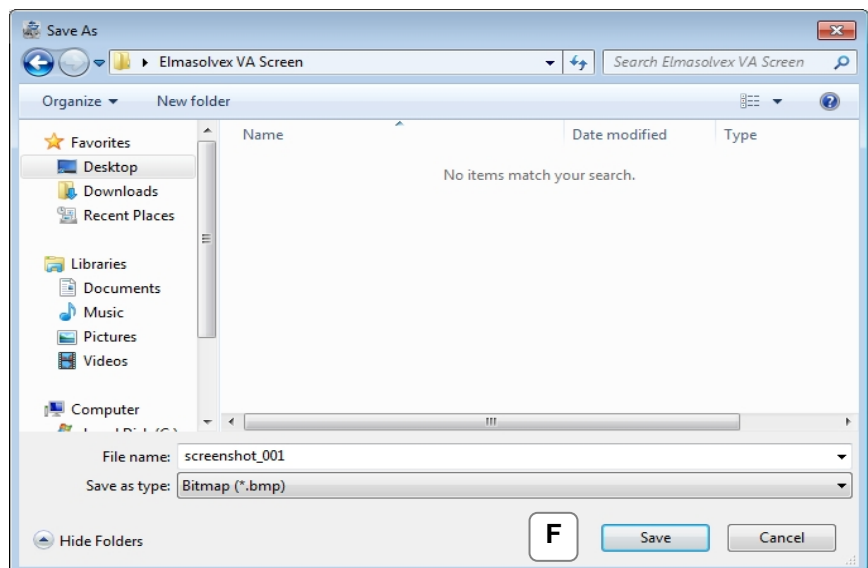
- C** An error message is output if any error occurs during the uploading of an image.
Check whether the machine is switched on and connected to the PC via USB cable. You can repeat the process by clicking on "Upload image" again.



- D** The PC software shows the progress using a loading bar with percent indicator while the image is being downloaded from the machine.



- E** The image has been transferred successfully to your PC. The image can now be saved on your computer.



- F** By clicking on "Save as", the loaded image preview can be saved as a bitmap file (*.bmp) at any location on the computer.

The PC software allocates a file name with an index by default, i.e. this index is incremented by one for each further saved image.

You can optionally use the file name proposed by the PC software or any own file name.



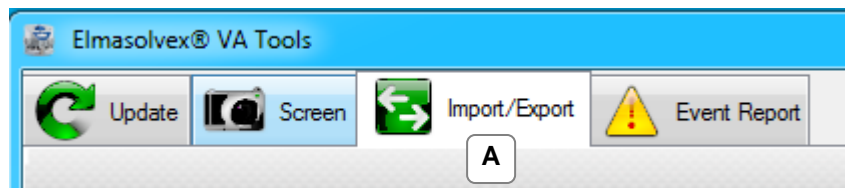
- G** Click on *"Upload image"* again to update the image preview in the PC software.
The current screen of the machine is loaded into the PC software and can be saved.

4.3

Managing cleaning programs

This chapter explains the following functions of the PC software:

- Backup of created cleaning programs of the watch cleaning machine to a computer
- Transfer of saved cleaning programs from a computer to a watch cleaning machine
- Deletion of created cleaning programs from the watch cleaning machine

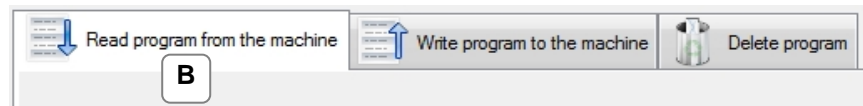


A For this select the tab "*Import/Export*".

4.3.1

Reading programs from the machine

Follow the instructions on the following pages if you would like to backup one or more cleaning programs located on the Elmasolvex VA to a computer.



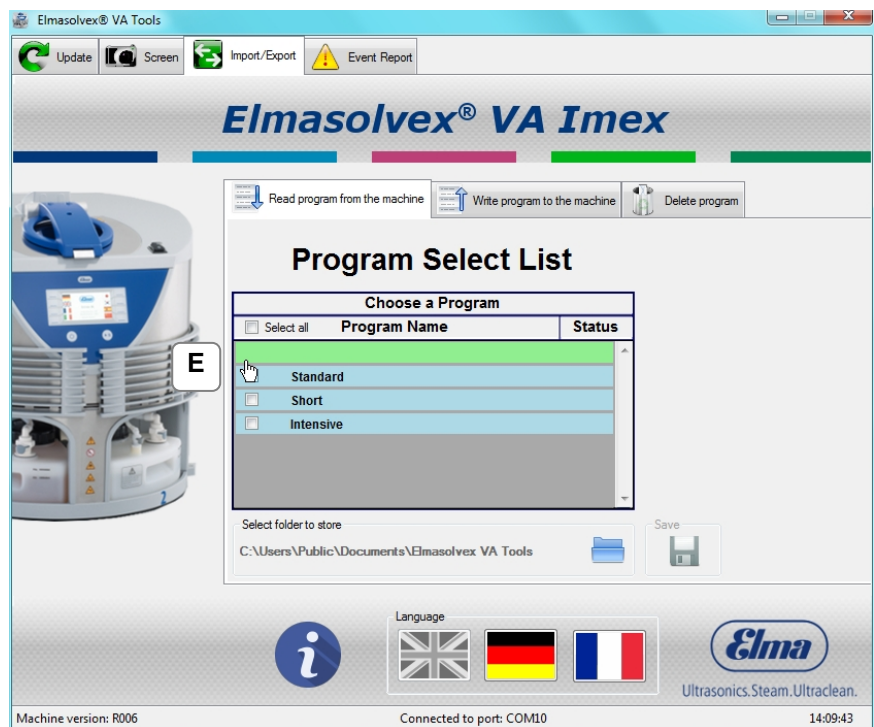
B Select the tab "*Read program from the machine*".



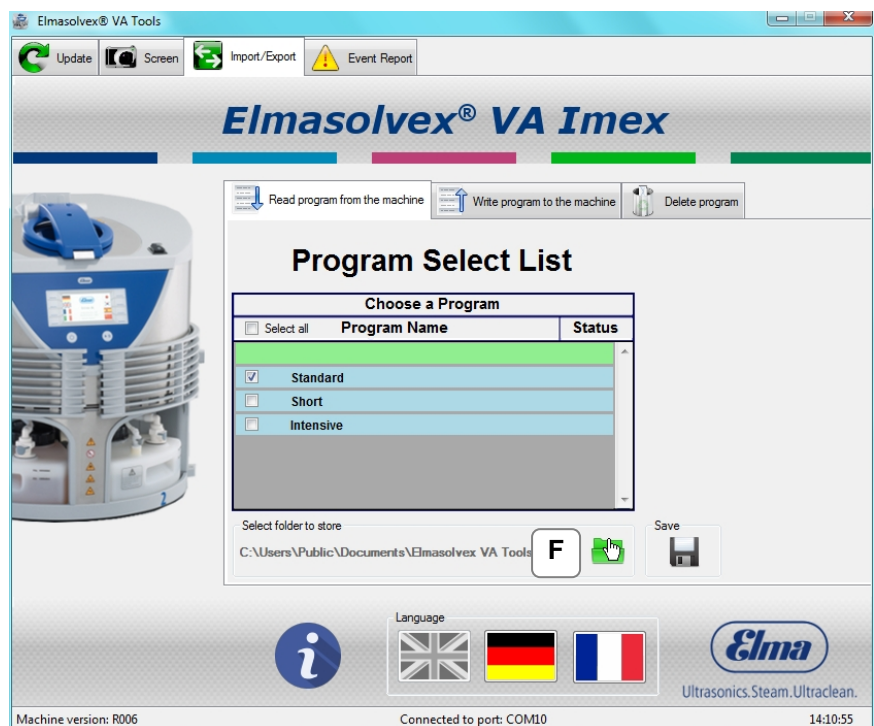
- C** In the tab „Read program from the machine“ the cleaning programs which are available on your machine are displayed. The cleaning programs highlighted in blue are standard programs which are installed on the Elmasolvex VA at the time of delivery. If additional cleaning programs created by the user are available on the machine, these are highlighted in green.



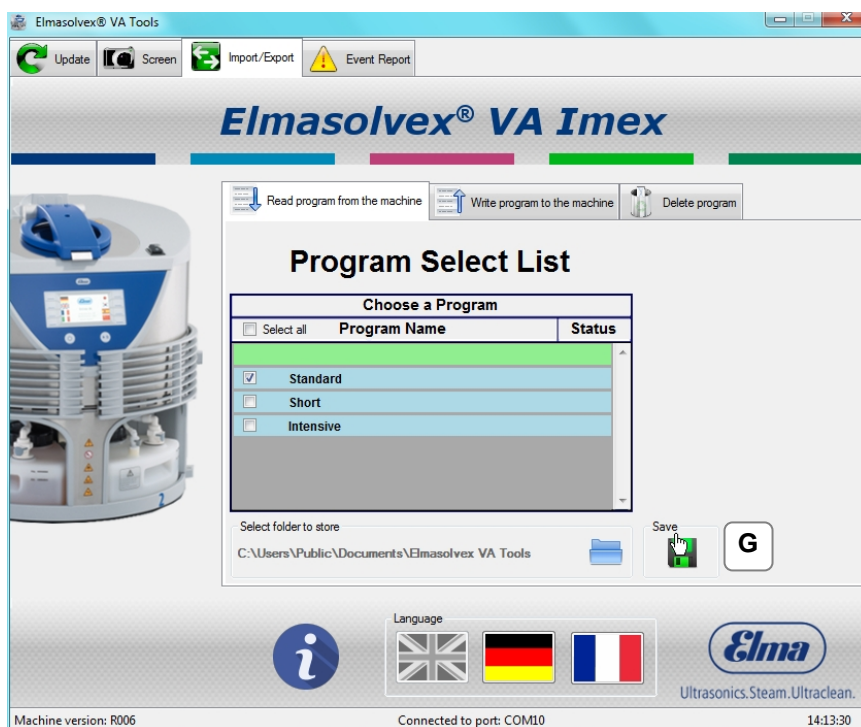
- D** All available programs are selected by clicking on "Select all". All selections are removed by clicking on the same checkbox again.



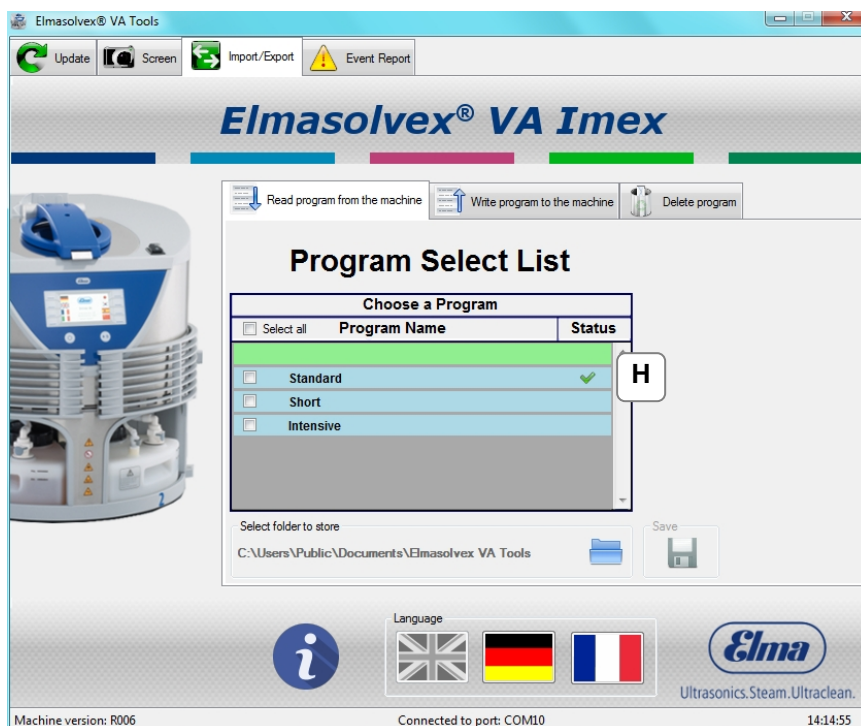
- E** Alternatively, individual programs can also be selected by clicking on the respective checkbox next to the program name.






- F** By default programs are saved in the displayed path. To change the storage location, click on the folder icon on the right next to the displayed storage path and select the required storage location.



- G** After selecting one or more programs, you can transfer the programs to your computer and save them there by clicking on "Save".

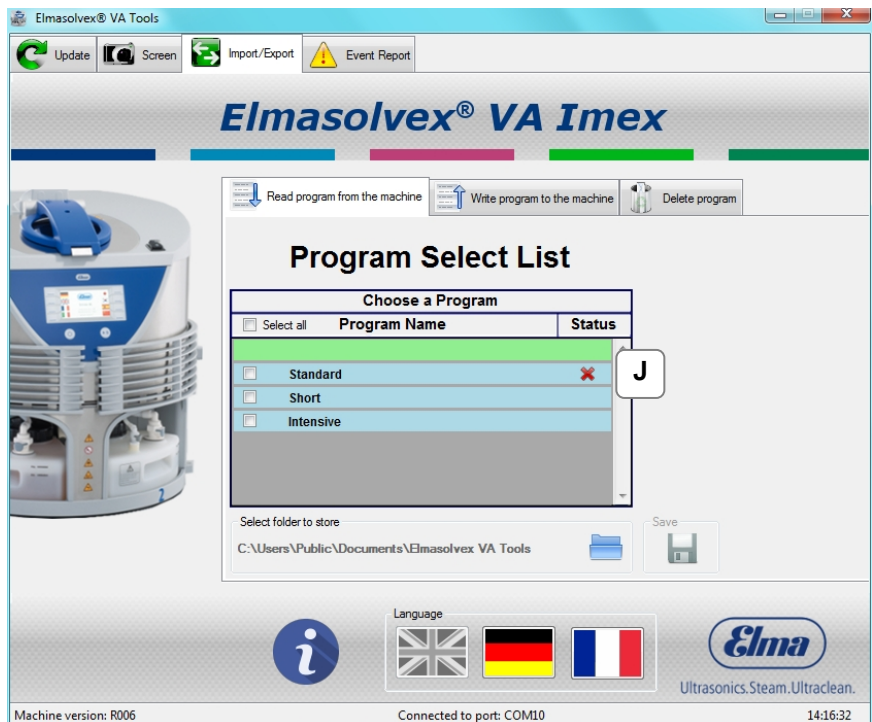


- H** A green tick is displayed on the right next to the program if the program has been saved successfully on the computer.

 Intensive.prg	5/12/2015 12:01 AM	PRG File	1 KB
 Short.prg	5/12/2015 12:01 AM	PRG File	1 KB
 Standard.prg	5/12/2015 12:01 AM	PRG File	1 KB

- I The saved programs on your computer are stored with the same name with which they are displayed on the Elmasolvex VA.

All saved cleaning programs have the ".prg" file extension, so they are identified as cleaning programs.



- J If the saving process has been cancelled or could not be performed successfully, a red X is displayed on the right next to the selected program.

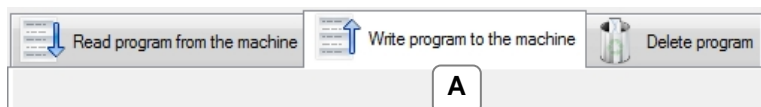
In the case of any errors, check whether the machine is switched on and connected to the computer via USB cable. Then restart the process.

4.3.2

Adding new programs

To retransfer cleaning programs that have been saved on a computer as described in chapter 4.3.1 to any Elmasolvex VA, proceed as described on the following pages.

Please note that the standard cleaning programmes highlighted in blue cannot be retransferred as they are write-protected.

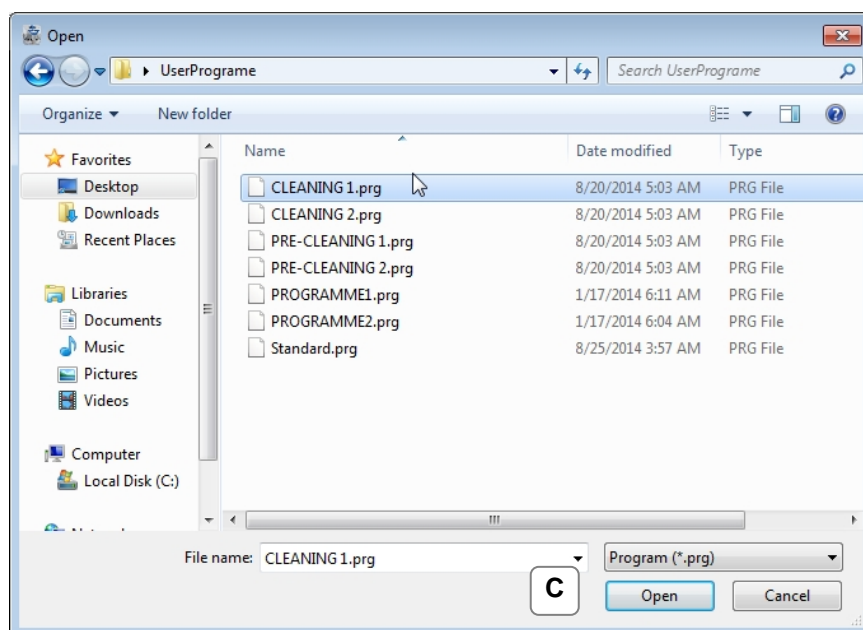


- A** First click on the tab "Import/Export" in the main menu and select the tab "Write program to the machine" there

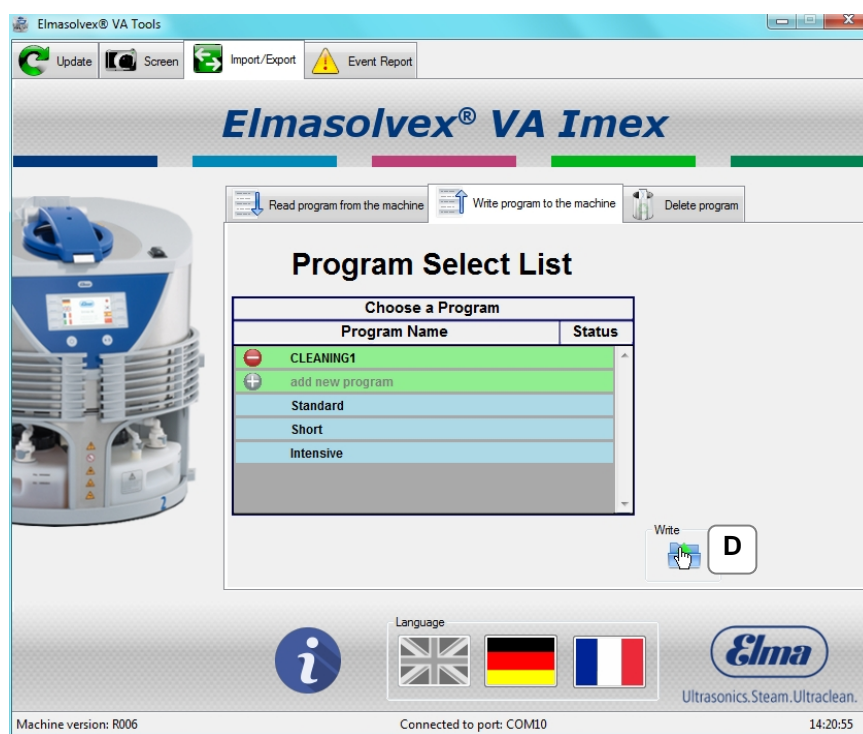


- B** In the tab "Write program to the machine", new programs can be transferred to the machine or existing programs can be overwritten.

A new program can be added by clicking on the plus symbol in the field "add new program".



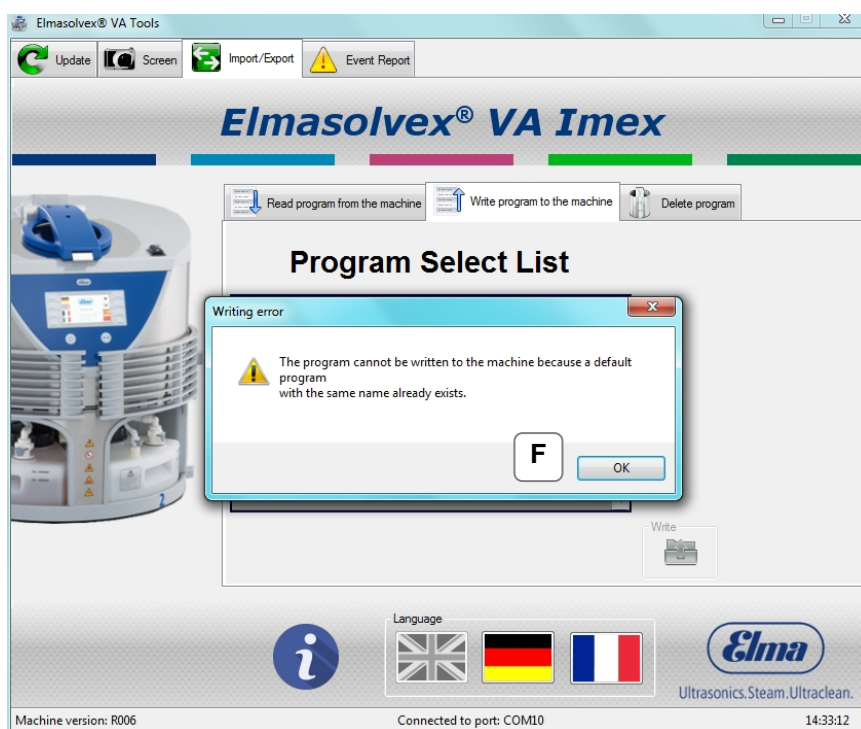
- C** Select the required program and open it.



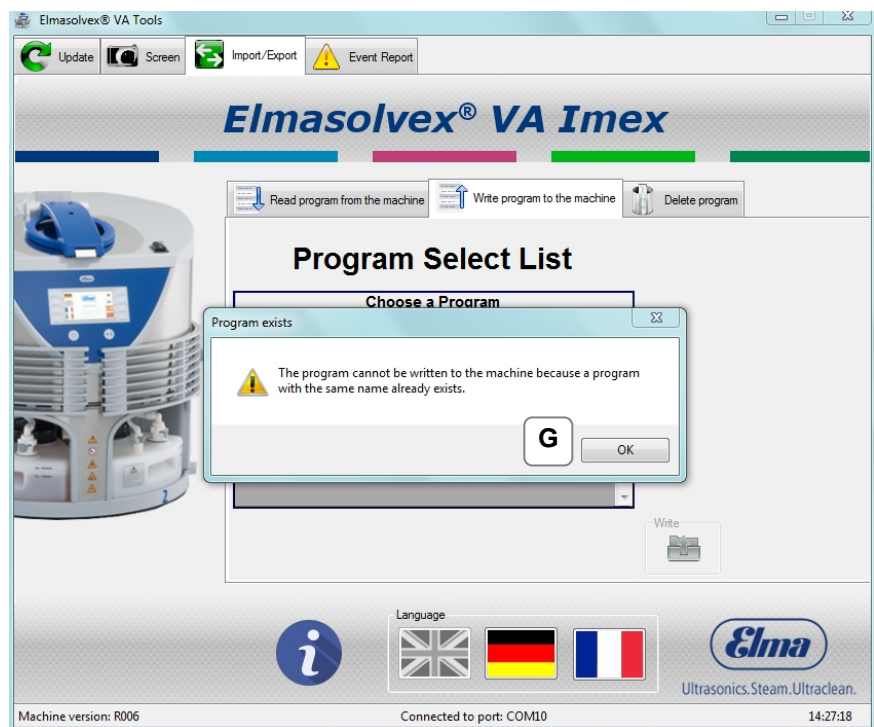
- D** The added cleaning program can now be transferred from the computer to your machine by clicking on "Write".



- E** If the cleaning program has been transferred successfully, a grey circle with white plus sign is displayed next to the transferred program. You can transfer further cleaning programs by repeating the above steps.



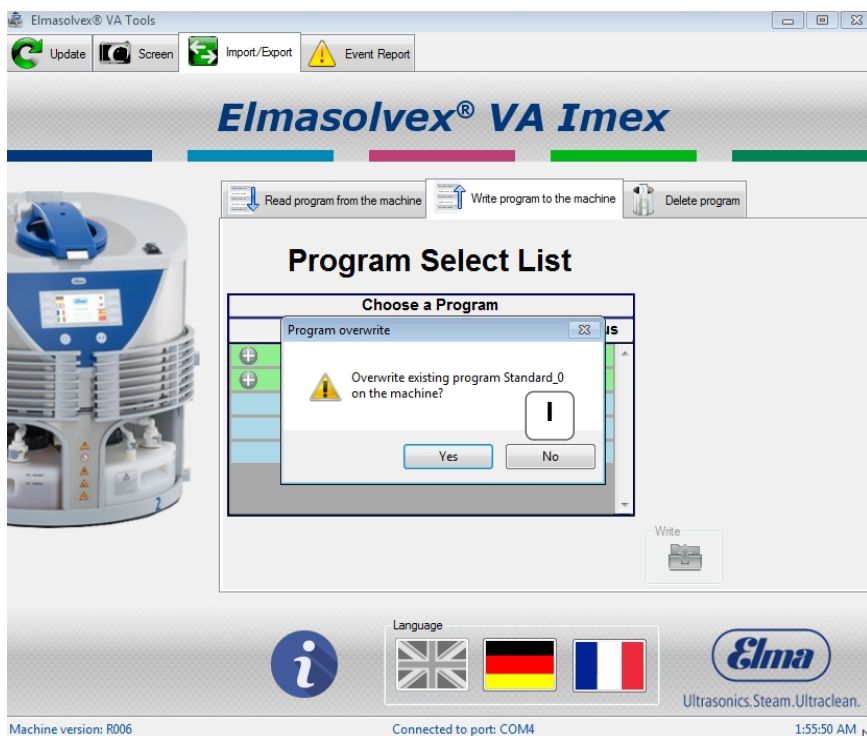
- F** Please note that the standard cleaning programmes highlighted in blue cannot be retransferred as they are write-protected.



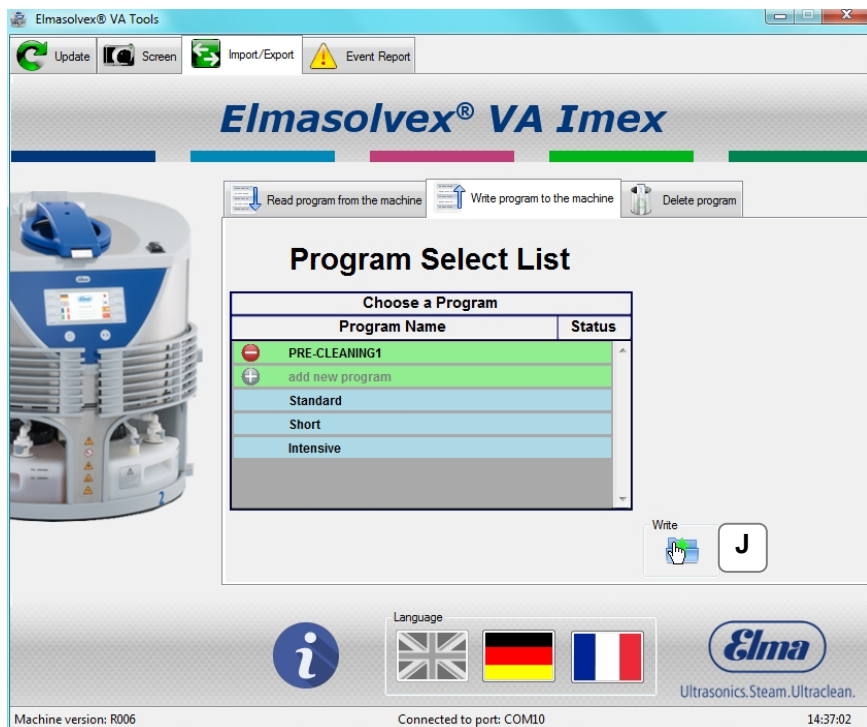
- G** Cleaning programs with the same name cannot be transferred to the machine. If you would like to replace a program with the same name, this must be deleted previously (see also chapter 4.3.3).



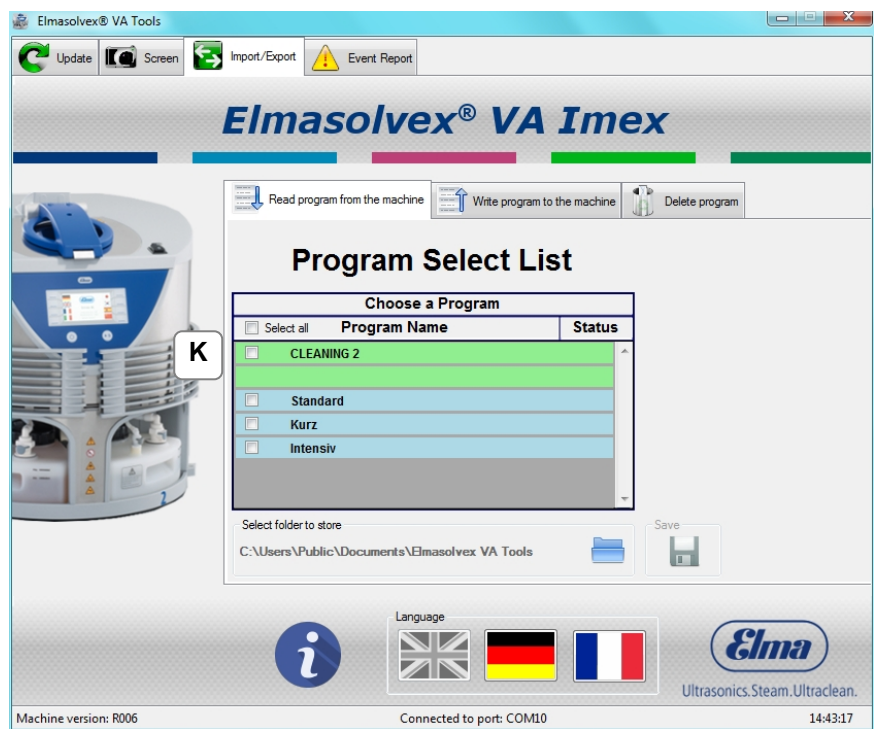
- H** To overwrite an existing program, click on the plus sign next to the program you want to overwrite and select a new one.



- I Follow the instructions and confirm with "Yes".



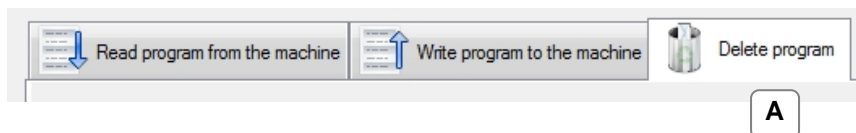
- J Click on "Write". Now the old cleaning program is overwritten by the new program.



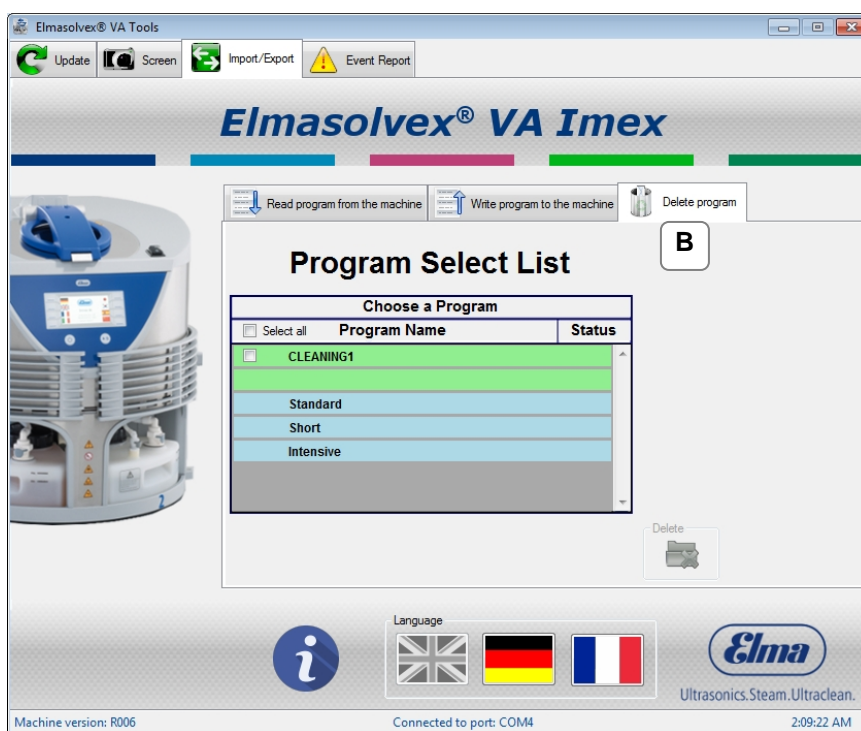
- K** The old program has been replaced successfully by the new program.

4.3.3 Deleting programs

You can use the Elmasolvex VA Tools PC software to delete cleaning programs from an Elmasolvex VA.



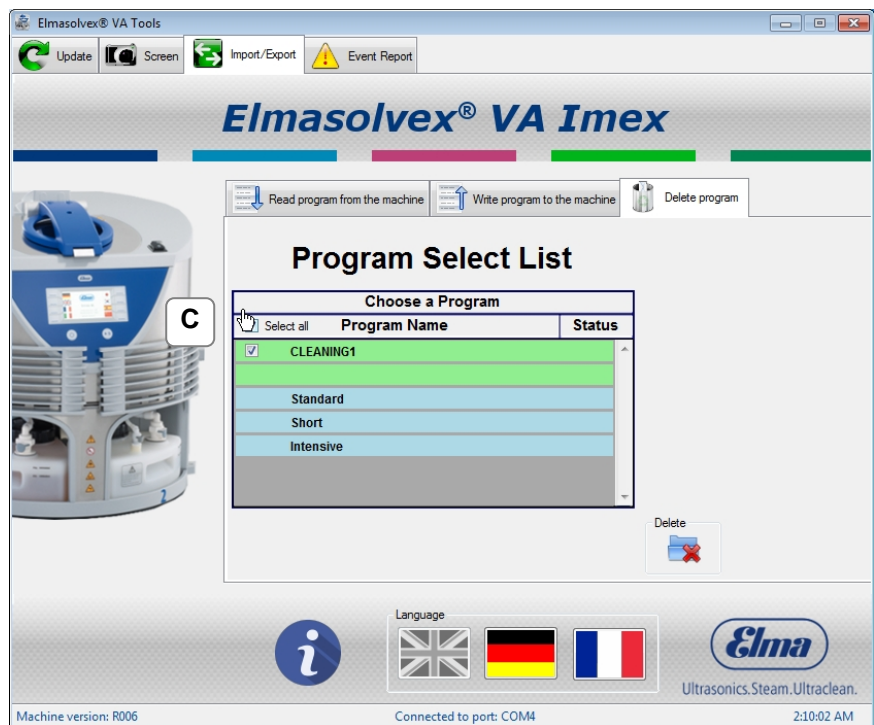
- A** Click on the tab "Import/Export" in the main menu and select the tab "Delete program".



- B** In the tab "Delete program", you can select cleaning programs that you would like to remove from your machine and deleted them.

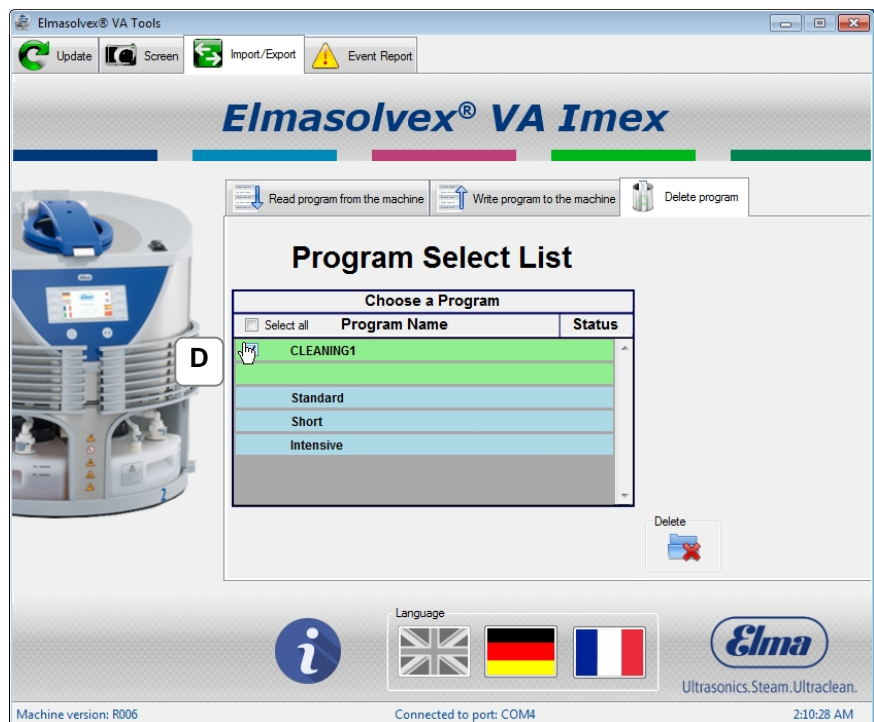
All existing cleaning programs located on the machine are displayed in the PC software.

The standard cleaning programs highlighted in blue cannot be deleted as they are write protected. Therefore, for these programs no check box is displayed.



- C** All programs that can be deleted, i.e. all programs that are not standard programs, are selected by clicking on "Select all".

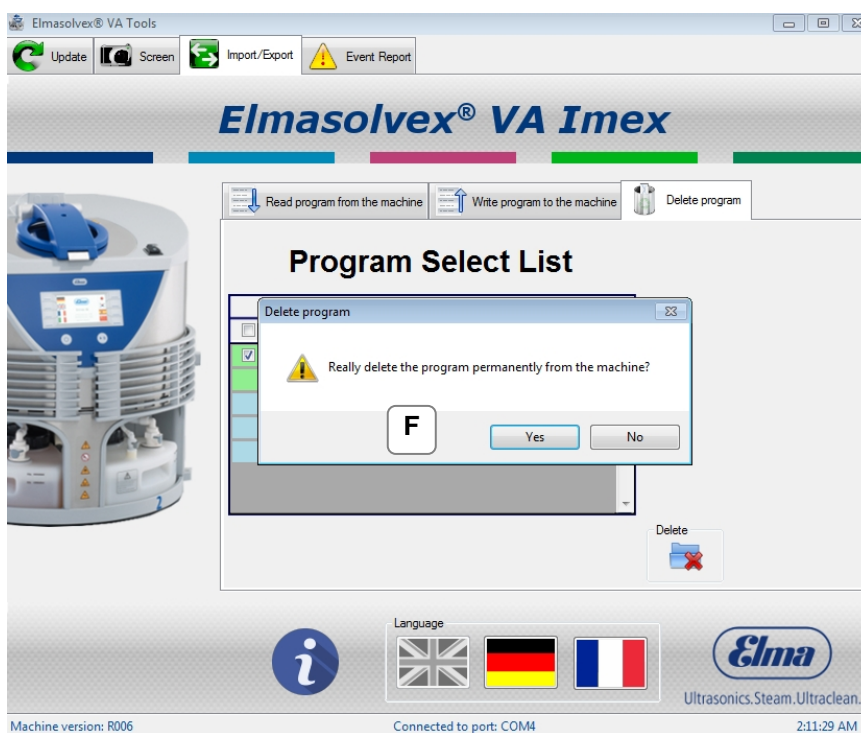
All selections are removed by clicking on the same checkbox again.



- D** Alternatively, individual programs can be selected by clicking on the respective checkbox next to the program name.



E After selecting the cleaning programs, click on "Delete".



F Click on "Yes" to delete all selected programs from your machine. They are irrevocably removed from the Elmasolvex VA.

4.4

Retrieving the machine event report

The menu of the Elmasolvex VA has an option to display a so-called "event report". This event report shows all status and error messages chronologically that have occurred during operation of the cleaning machine. You can either retrieve and view this list at your machine or transfer the entire list to your computer using the PC software.

Furthermore, you have the possibility to create a PDF file of the event report.

If necessary, you can send this PDF file to the manufacturer in the event of problems with your machine.

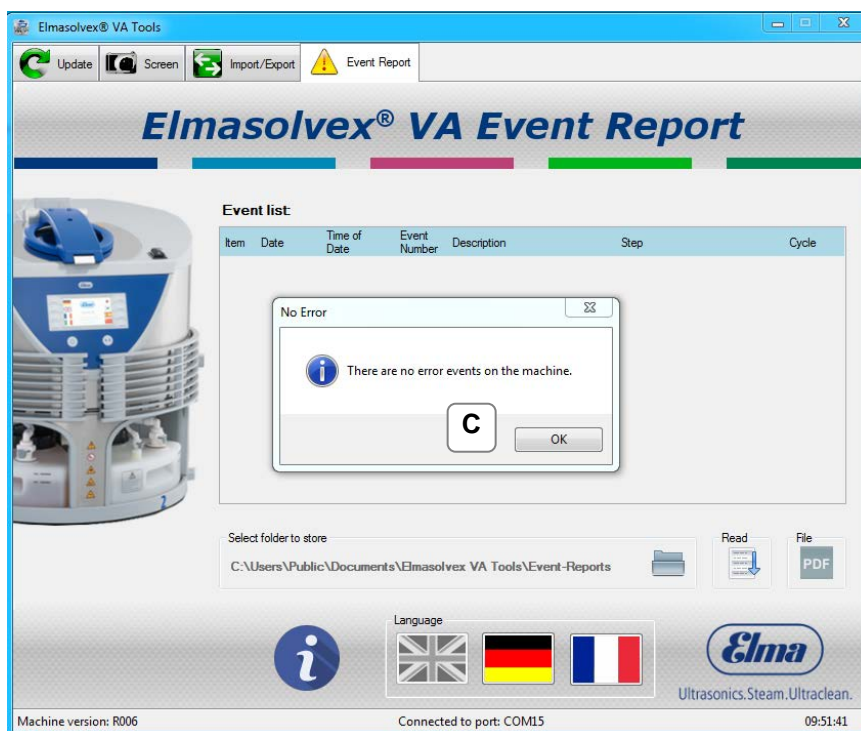
This chapter explains how you can read out and save the event report using the PC software.



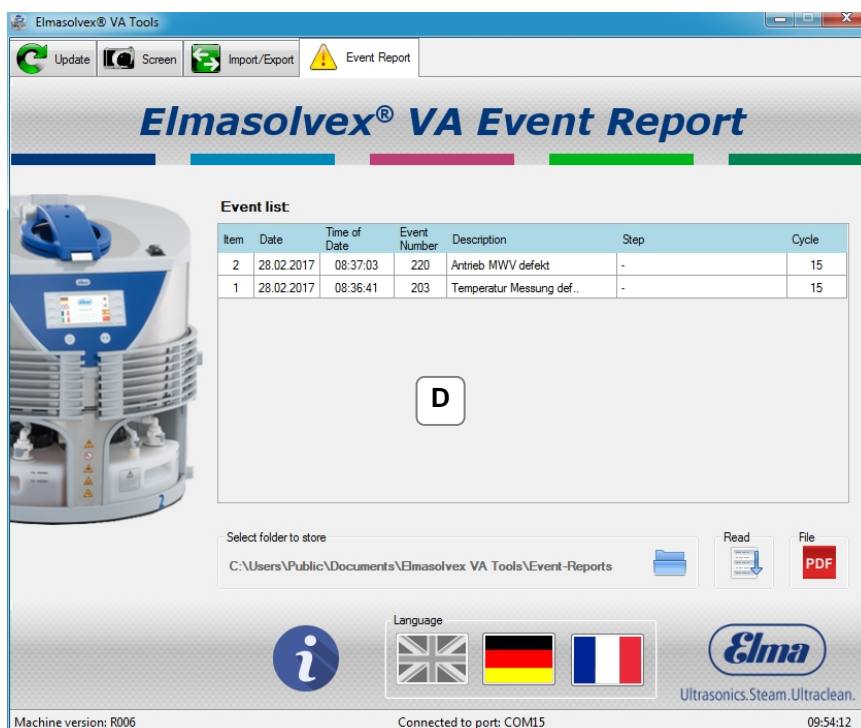
- A** Select the tab "Event Report" for this.



- B** Click on "Read" to transfer the event report of your machine to your computer.



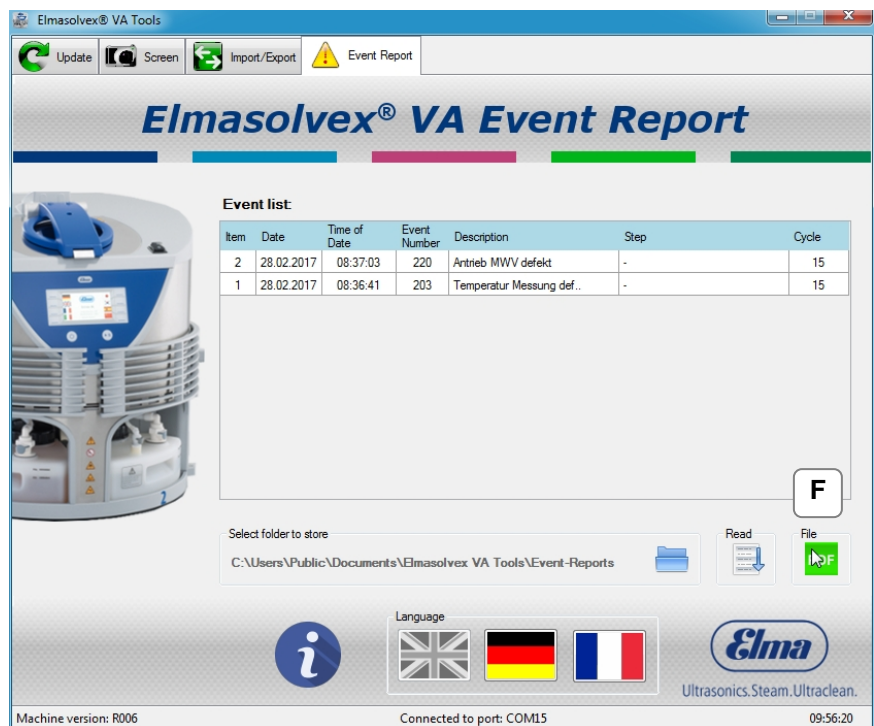
- C** The above notification is displayed if there are no status or error events on your machine.



- D** If status and error events are available on your machine, they are displayed chronologically in a table. The latest event is at the top and the oldest event is at the bottom.

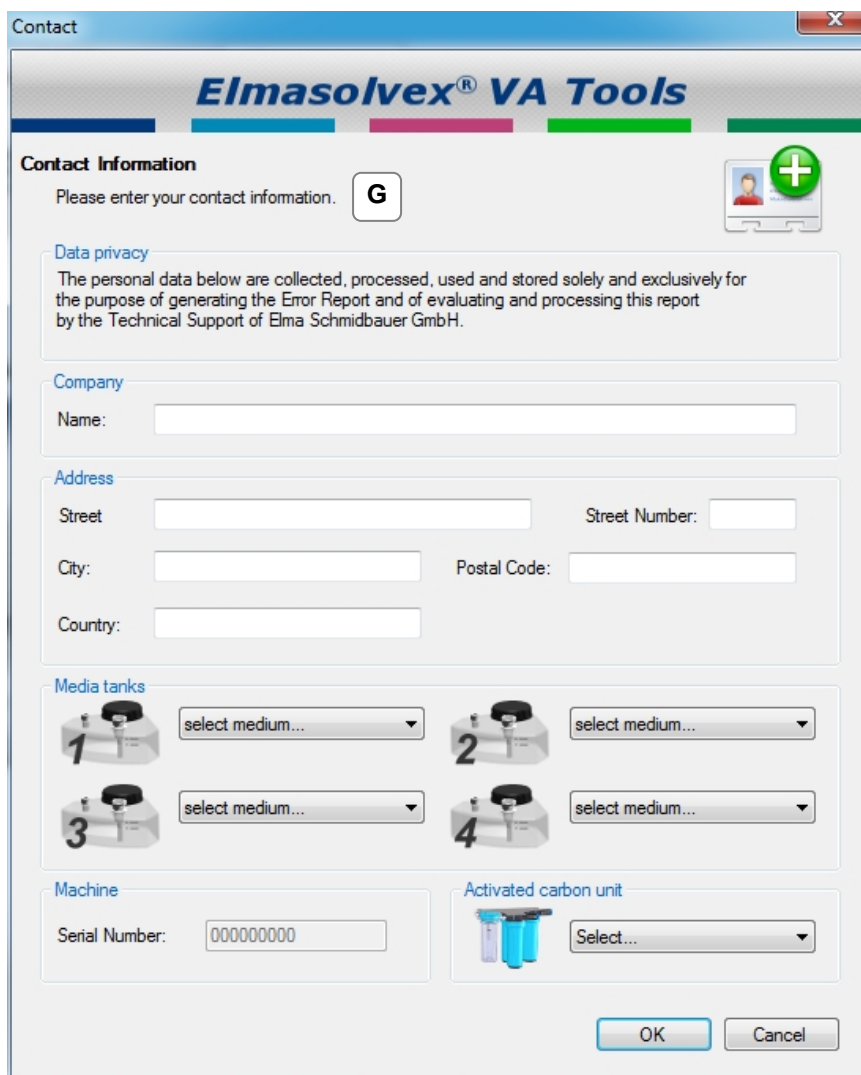


- E** Now you have the possibility to save the event report on your computer as a PDF file.
The event report is saved in the displayed path by default. If the storage location should be changed, then click on the folder icon on the right next to the displayed storage path and select the required storage location.



- F** Click on the icon with the name "PDF" to create the event report as a PDF file.

The following dialogue opens.



- G** It is necessary to fill in the above contact details so that the created event report can be uniquely assigned to a customer and the respective Elmasolvex VA.

Starting from the machine software version *R006*, the serial number of the Elmasolvex VA is retrieved from the machine automatically and entered in the form.

Contact

Elmasolvex® VA Tools

Contact Information

Please enter your contact information.

Data privacy

The personal data below are collected, processed, used and stored solely and exclusively for the purpose of generating the Error Report and of evaluating and processing this report by the Technical Support of Elma Schmidbauer GmbH.

Company

Name: Samplecompany

Address

Street: Samplestreet Street Number: !

City: Sampletown Postal Code: 77777

Country: Great Britain

Media tanks

1 elma wf pro 2 elma suprol pro

3 elma suprol pro 4 elma wf pro

Machine

Serial Number: 000000000

Activated carbon unit

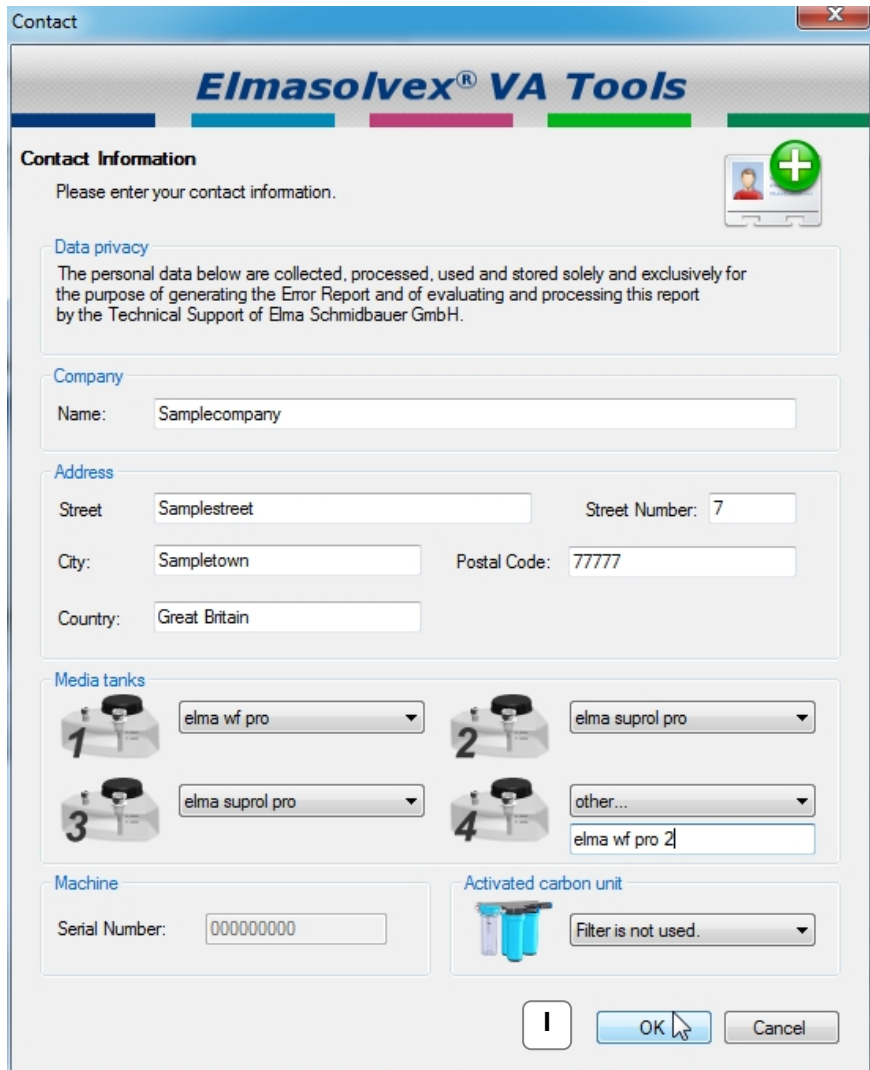
Filter is not used.

Error

Please enter information into all fields. **H**

OK Cancel

- H** The PDF document cannot be created if you have not filled in every field. In this case, complete your entries.



- I If all fields are filled in correctly, the event report can be created as a PDF file by clicking on "OK".

If the PDF file has been created successfully and a PDF reader is installed on the computer, the document opens automatically.

Elmasolvex® VA System Report



Ultrasonics.Steam.Ultraclean.

Samplecompany · Samplestreet 7 · 77777 Sampeltown · Great Britain

Elma Schmidbauer GmbH
Gottlieb-Daimler-Str. 17
D-78224 Singen, Germany

J





Product: Elmasolvex VA

Software version: R008rc1


Serial number: 100045044

Date: 02.08.2017

1. Media Tanks:

Item	Tank	Medium
1		elma wf pro
2		elma suprol pro
3		elma suprol pro
4		elma ef pro 2

2. Activated Carbon Unit:

Item	Activated Carbon Unit	Status
1		Filter is not used.

Elma Schmidbauer GmbH · Gottlieb-Daimler-Str. 17 · D-78224 Singen, Germany

Elmasolvex® VA System Report



Ultrasonics.Steam.Ultraclean.

3. Operating Hours / Operating Cycles:

3.1 Operating Hours

Item	Component	Hours
1	Vacuum pump	2h:7min
2	Basket rotation	0h:25min
3	Basket spinning	0h:11min
4	Ultrasonic	1h:35min
5	Heating	0h:27min
6	Overall	11h:56min

3.2 Operating Cycles

Item	Component	Cycles
1	Vacuum valve	513
2	Aerate valve	164
3	Aerate valve 2	385
4	Multi-way valve	306
5	Overall cleaning cycles	14

Elma Schmidbauer GmbH · Gottlieb-Daimler-Str. 17 · D-78224 Singen, Germany

Elmasolvex® VA System Report

Ultrasonics. Steam. Ultraclean.

4. Device Specific Parameters

Item	Parameter	Value
1	Filling position 1	7746ms
2	Draining position 1	27862ms
3	Create vacuum with liquid position 1	6504ms
4	Create vacuum without liquid position 1	29413ms
5	Slow aerating position 1	1181ms
6	Fast aerating position 1	1000ms
7	Maximum aerating position 1	0s
8	Filling position 2	9465ms
9	Draining position 2	28450ms
10	Create vacuum with liquid position 2	7288ms
11	Create vacuum without liquid position 2	26989ms
12	Slow aerating position 2	2000ms
13	Fast aerating position 2	1000ms
14	Maximum aerating position 2	0s
15	Filling position 3	9590ms
16	Draining position 3	27225ms
17	Create vacuum with liquid position 3	7938ms
18	Create vacuum without liquid position 3	27763ms
19	Slow aerating position 3	1925ms
20	Fast aerating position 3	1000ms
21	Maximum aerating position 3	0s
22	Filling position 4	9640ms
23	Draining position 4	13550ms
24	Create vacuum with liquid position 4	7688ms
25	Create vacuum without liquid position 4	27266ms
26	Slow aerating position 4	1075ms
27	Fast aerating position 4	1000ms

Elma Schmidbauer GmbH · Gottlieb-Daimler-Str. 17 · D-78224 Singen, Germany

Elmasolvex® VA System Report



Ultrasonics.Steam.Ultraclean.

Item	Parameter	Value
28	Maximum aerating position 4	0s
29	Gradient VAK1	0s
30	Leak-tightness VAK1	0s
31	Slow aerate VAK1	0s
32	Maximum vacuum VAK1	0mbar
33	Gradient VAK2	0s
34	Leak-tightness VAK2	0s
35	Slow aerate VAK2	0s
36	Maximum vacuum VAK2	0mbar
37	Multi-way valve move	1000ms
38	Short vacuum / aerate	5730ms
39	MWV offset	7036

5. Event List:

Item	Date	Time of Date	Event Number	Description	Step	Cycle
5	08.01.2017	11:15:46	181	temperature measure	Drying,2	11
4	-	00:24:22	278	Communication memory c..	n/a,255	11
3	-	13:53:24	278	Communication memory c..	n/a,255	11
2	08.01.2017	10:31:36	283	5-year service required!	n/a,255	11
1	08.01.2017	10:31:24	300	Software update..	n/a,255	11

Elma Schmidbauer GmbH · Gottlieb-Daimler-Str. 17 · D-78224 Singen, Germany

Elmasolvex® VA System Report



Ultrasonics.Steam.Ultraclean.



6. Pressure Logs:

6.1 Cleaning Process:

Figure 1: Position 1 - no liquid

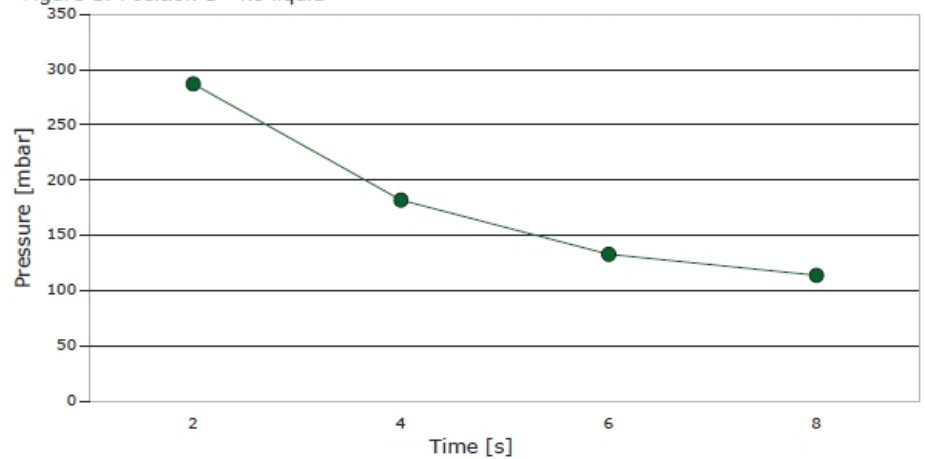
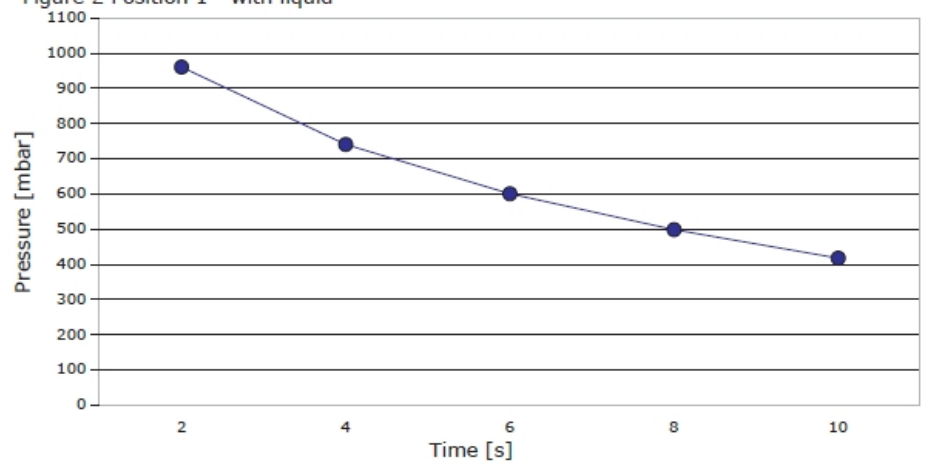


Figure 2 Position 1 - with liquid



Elma Schmidbauer GmbH · Gottlieb-Daimler-Str. 17 · D-78224 Singen, Germany

Elmasolvex® VA System Report



Ultrasonics.Steam.Ultraclean.



Figure 3: Position 2 - no liquid

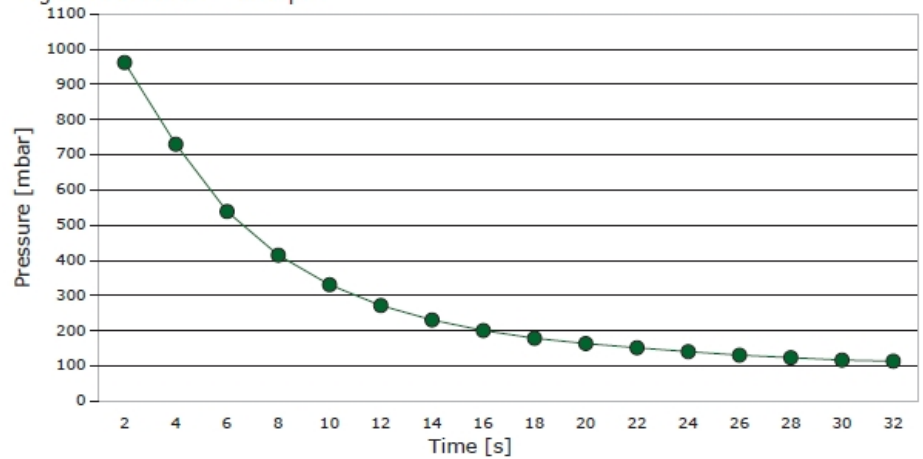
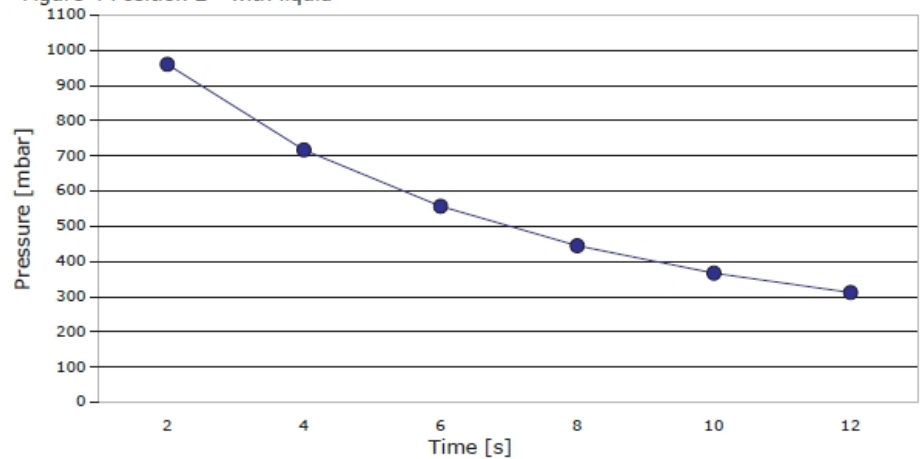


Figure 4 Position 2 - with liquid



Elma Schmidbauer GmbH · Gottlieb-Daimler-Str. 17 · D-78224 Singen, Germany

Elmasolvex® VA System Report



Ultrasonics.Steam.Ultraclean.



Figure 5: Position 3 - no liquid

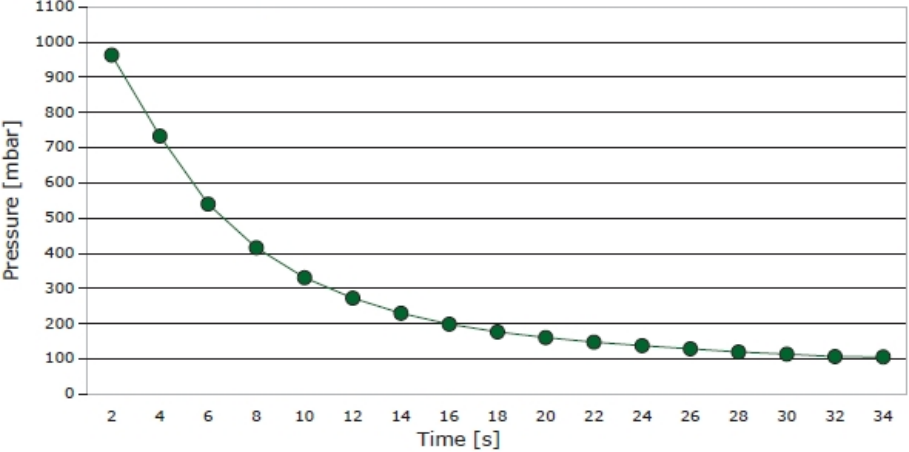
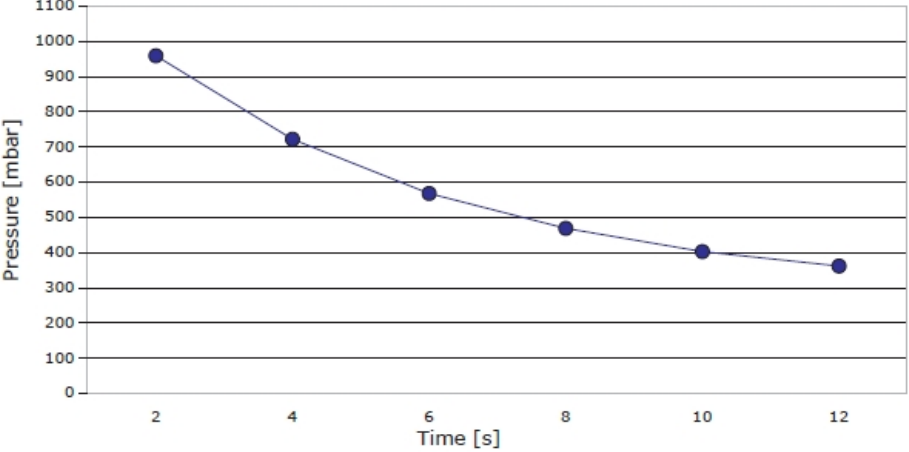


Figure 6 Position 3 - with liquid



Elma Schmidbauer GmbH · Gottlieb-Daimler-Str. 17 · D-78224 Singen, Germany

Elmasolvex® VA System Report



Ultrasonics.Steam.Ultraclean.



Figure 7: Position 4 - no liquid

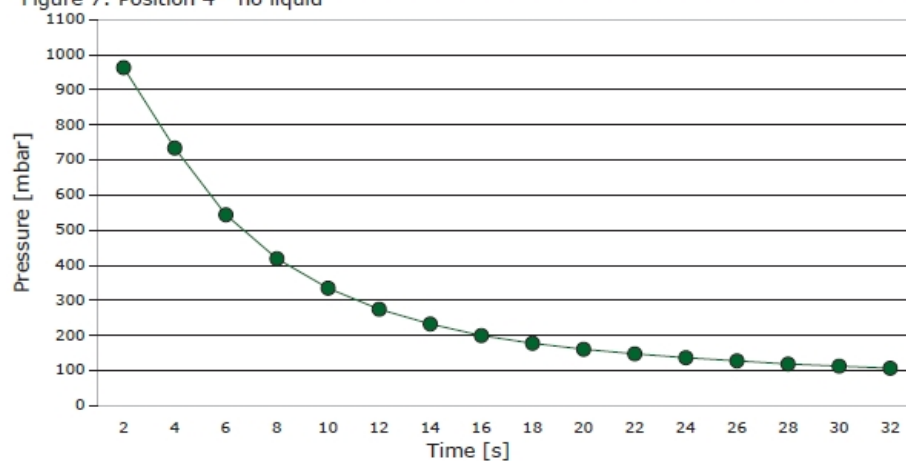
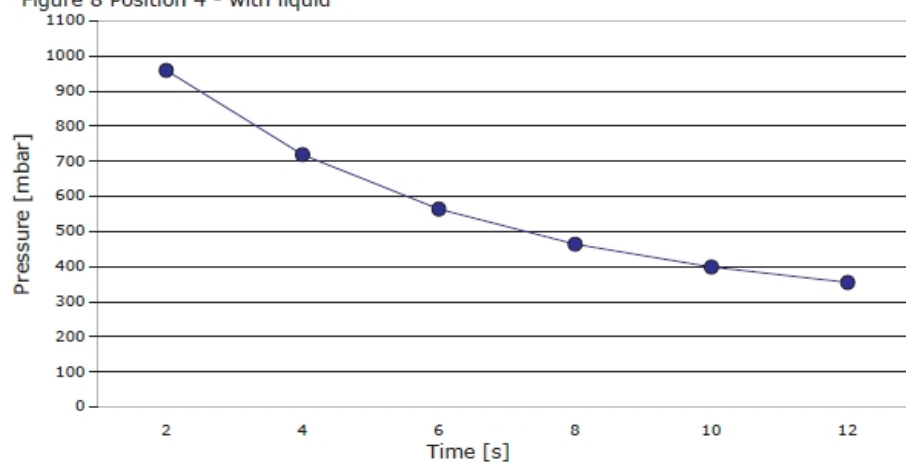


Figure 8 Position 4 - with liquid



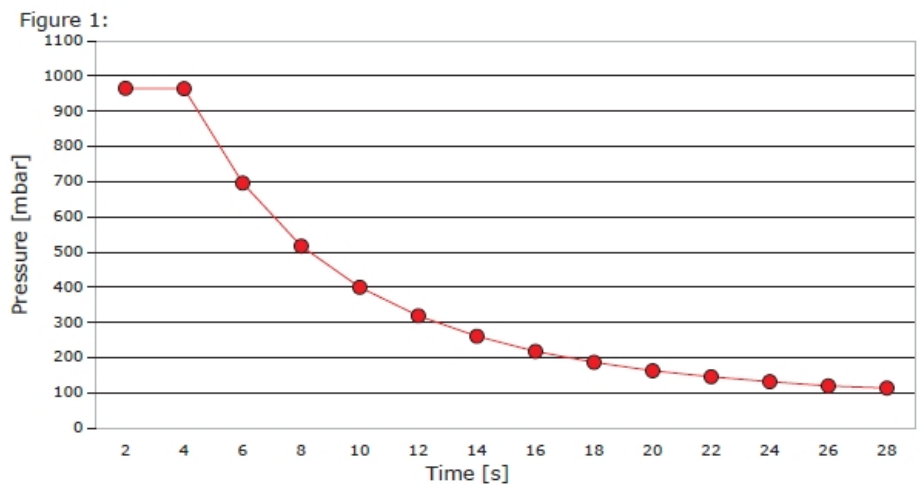
Elma Schmidbauer GmbH · Gottlieb-Daimler-Str. 17 · D-78224 Singen, Germany

Elmasolvex® VA System Report

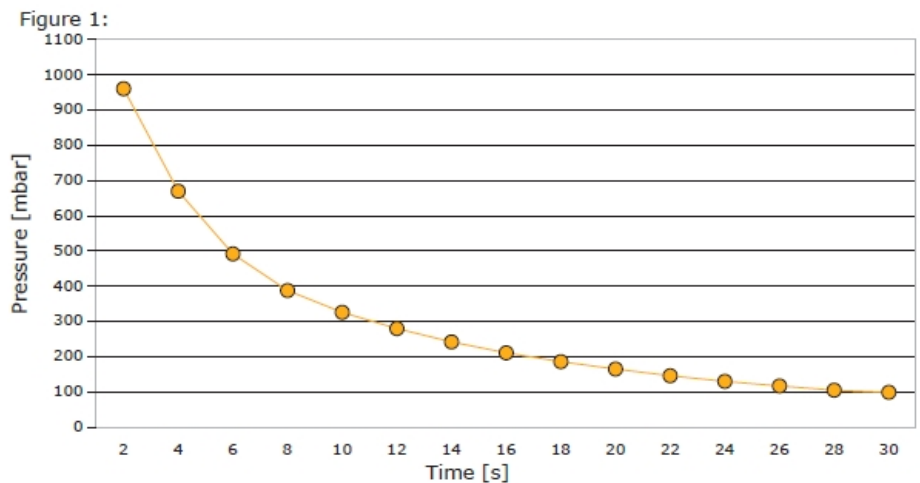


Ultrasonics.Steam.Ultraclean.

6.2 Drying Process:



6.3 Safety Test:



This document was created with the help of the PC program "Elmasolvex VA Tools".
Version: V006

Elma Schmidbauer GmbH · Gottlieb-Daimler-Str. 17 · D-78224 Singen, Germany

- J The above screenshot shows the created PDF file of the event report.

Now you can print and/or save the PDF document.

5**Manufacturer address/contact address****Elma Schmidbauer GmbH**

Gottlieb-Daimler-Str. 17, D-78224 Singen

Tel (head office) +49 (0) 7731 / 882-0

Fax (head office) +49 (0) 7731 / 882-266

info@elma-ultrasonic.com

www.elma-ultrasonic.com

Do you have any questions or comments about this device,
its operation or the operating instructions?

Please feel free to contact us at any time:

Technical Support

Tel +49 (0) 7731 / 882-280

Fax +49 (0) 7731 / 882-266

support@elma-ultrasonic.com